

**LORTONE**  
2007



**Tools for Lapidary and Jewelry**

## Our History ...

For over 45 years, serious lapidaries have considered Lortone the standard for performance and durability. Since then, Lortone has continued to develop machines for every lapidary need. Whether you're active in cutting slabs or bookends, polishing cabs, or tumbling beach agate, Lortone makes a machine that will keep functioning for many years.

A lot goes into a machine to make it deserving of the Lortone name. Our tradition of using superior materials and workmanship hasn't changed. We design our equipment for durability and build it with careful attention to quality. We continue to use proven designs, premium steel, and quality construction. We don't build throw-away machines and we don't outsource our products. All our machines are made by us, right here in Washington.

We have a long history of producing high value, economical lapidary and jewelry products. The Lortone name, then and now, is synonymous with reliability, satisfaction and value. We're proud of that heritage.

## Inside Our Catalog ...

Today we offer more choices than ever. Like our easy to use Tumbling Kits. Or our economical Spin On Polish Heads. Or our wide selection of Abrasives and Polish.



Lortone tumbling kits combine top quality tumblers with abrasives, polish and rough rock in an easy to use package. Available for the popular 3A, 33B, 3-1.5, and 45C model tumblers.

Our redesigned large capacity tumblers feature an all new laser cut low profile base, newly designed traction rollers and sealed bearings. Barrels run on belt-driven shafts and are guided by nylon rollers to assure proper barrel alignment during operation. Comes in 3 versatile models.



Abrasives and polishes are our specialty. Our in-house packaging line allows us to keep costs down and stock a wide range of materials for quick shipment. Whether you need bulk containers, prepackaged 4-step kits or individual abrasives, we can fill your order.



## Your Guarantee...

We make all Lortone tumblers, saws, laps, and arbors in our factory to the highest possible standards with modern equipment. U.S. made. All LORTONE products are thoroughly tested and proven in use by demanding craftsmen. Their long life is testament to the quality we build in. All carry a one year warranty on materials and workmanship.

## Table of Contents

Tumblers .....	4-6
Tumbler Parts .....	7
Abrasives .....	8
Polishes .....	9
Arbors and Accessories .....	10 - 13
Flat Laps .....	13
Expandable Drums and Grinding Wheels .....	14
Polish Heads, Sanding Belts and Discs .....	15
Diamond Products .....	16 - 17
Trim Saws .....	18 - 19
Slab Saws .....	20 - 22
Saw Accessories .....	23
Diamond Blades .....	24 - 25
Specialty Saws & Vibrating Tumblers .....	26 - 27
Cabbing Supplies .....	28 - 29
Polishers, Dust Collectors & Buffs .....	30
Buffing Compounds & Adhesives .....	31
Jewelry Hand Tools .....	32 - 33
Geology Tools .....	34 - 35
Books and Guides .....	36 - 39
Motors and Spare Parts .....	40

## How to Find Lortone Products ...

LORTONE has a well established network of knowledgeable, experienced dealers through whom equipment is available. We invite you to visit one of the many authorized dealers across the country and around the world which carry LORTONE products.

For the location of your nearest dealer, call or visit us on the internet.

### LORTONE

12130 Cyrus Way, Mukilteo, WA 98275-5700

(425) 493-1600 (ph) or (425) 493-9494 (fax)

Email: [equipment@lortone.com](mailto:equipment@lortone.com)

[WWW.LORTONE.COM](http://WWW.LORTONE.COM)

Phone orders 1-800-426-6773

copyright © 2007 Lortone, Inc.

# TUMBLERS

Lortone tumblers are perfect for small applications or for the beginning hobbyist. Each tumbler is sturdy, easy to operate, and UL/CSA approved. Our patented molded rubber barrels provide extra sound absorption while delivering excellent results. Illustrated instruction book included.



## 3A

Our most popular single-barrel tumbler is the perfect size for getting started. Holds up to 3 lbs. of rock or jewelry. Shipping weight: 5 lbs.

#001-092 \$ 77.00



## 33B

Tumble twice as much at one time! Two 3 lb. barrels mean extra flexibility. Polish in one barrel while grinding in another. Shipping weight: 7 lbs.

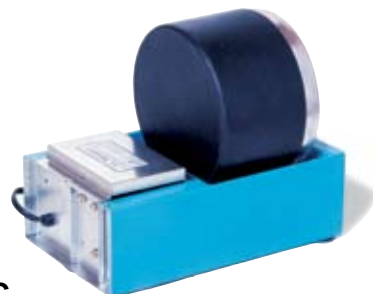
#004-091 \$ 109.50



## 3-1.5

Get more done! Our most versatile small barrel tumbler comes with three 1.5 lb. barrels. Shipping weight: 7 lbs.

#004-093 \$ 116.50



## 45C

Need to do more in limited space? This machine's larger 4 lb. barrel is great for bigger loads and larger materials. Shipping weight: 7 lbs.

#004-092 \$ 109.50

## Tumbler Kits

Our kits are perfect as an introduction to tumbling. Each comes complete with everything to produce beautifully polished stones the first time. Choose the tumbler model you prefer and we include a 4-Step Abrasive and Polish Kit, plastic pellets, rough stones and illustrated instructions.

Shipping weight: As shown.

3A Kit (13 lbs.) #081-091 \$ 94.00

33B Kit (17 lbs.) #081-092 \$ 125.00

3-1.5 Kit (17 lbs.) #081-093 \$ 132.00

45C Kit (17 lbs.) #081-094 \$ 125.00



## 4-Step Kit

Quality abrasives and polishing compounds produce a professional high gloss finish on 12 lbs. of rock. For tumbling most hard stones.

Shipping weight: 5 lbs.

#590-030 \$ 19.90



## Large 4-Step Kit

Polish More! Finish up to 60 lbs of rock with our large 4-Step kit. Includes 5 pounds each of high purity abrasives and polish.

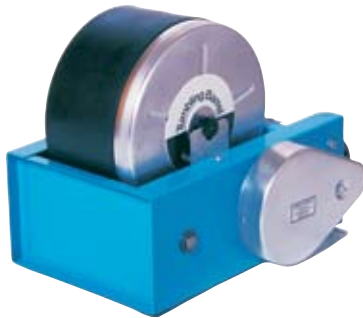
Shipping weight: 26 lbs.

#590-032 \$ 82.00





Perfect for moderate production or tumbling larger items, our mid-size tumblers can accommodate 6 to 12 pound loads with the same outstanding performance as our smaller tumblers. Designed for continuous shop operation, they feature our patented barrels with 10-sided interiors, leak-proof closures, overload protected motors, and rugged steel frames.



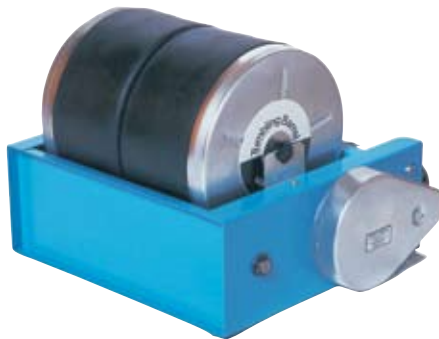
## QT6

Rugged design for larger stones.  
Single 6 lb. capacity barrel.  
Shipping weight: 13 lbs.  
#006-090 \$ 159.00



## QT12

Our best mid-size tumbler.  
Large capacity for high volume production.  
Single 12 lb. capacity barrel.  
Shipping weight: 17 lbs.  
#006-091 \$ 179.00



## QT66

Extra versatility - great performance!  
Double 6 lb. capacity barrels.  
Shipping weight: 18 lbs.  
#006-092 \$ 196.00

## C300-12

The most versatile tumbler for shop production with the versatility of 3 (12 lb) barrels. Includes barrels, belt guard, overload protected motor with switch.  
Shipping weight: 78 lbs.  
#009-092 \$ 545.00

**NEW!**

## C100-12

12 lb barrel. Includes barrel, belt guard, overload protected motor with switch.  
Shipping weight: 46 lbs.  
#009-090 \$ 375.00



## C200-12

Perfect for shop production with the versatility of 2 (12 lb) barrels. Includes barrels, belt guard, overload protected motor with switch.  
Shipping weight: 65 lbs.  
#009-091 \$ 445.00

## Bases Only

Motor and barrels not included. Can be used with either 6 lb or 12 lb barrels.

C100 Base (32 lbs.)	#009-070	\$ 175.00
C200 Base (41 lbs.)	#009-071	\$ 195.00
C300 Base (43 lbs.)	#009-072	\$ 225.00

# COMMERCIAL TUMBLERS

**Industrial capacity** for job shop performance! If you're processing large amounts of stone or deburring metal castings or stampings, our commercial tumblers fit the bill. They offer superior high-volume finishing and deliver trouble-free results 24 hours a day.

We build the frames of industrial grade steel and match them with six-sided steel barrels fitted with replaceable neoprene liners. Sealed ball bearings, full length drive shaft covers and roller barrel guides ensure years of operation.

## C20

Compact size with industrial capability.  
20 lb. capacity barrel with replaceable liner.  
Includes barrel, belt guard, overload protected motor with switch.

Barrel ID:  $7\frac{1}{2}$ " across flats x 7" deep.

Shipping weight: 58 lbs.

#009-095 \$ 595.00



NEW!

NEW!



## C40

Our best high capacity tumbler with lifetime construction. 40 lb. capacity barrel with replaceable liner. Includes barrel, belt guard, overload protected motor with switch.

Barrel ID: 9" across flats x  $11\frac{7}{8}$ " deep.

Shipping weight: 78 lbs.

#009-096 \$ 670.00

## C20-2

Conveniently runs 2 barrels at the same time to increase volume, decrease time and save money.

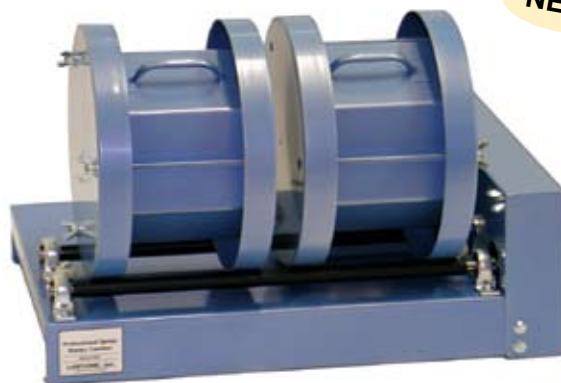
2 - 20 lb. capacity barrels with replaceable liners.

Includes 2 barrels, belt guard, overload protected motor with switch.

Barrel ID:  $7\frac{1}{2}$ " across flats x 7" deep.

Shipping weight: 86 lbs.

#009-097 \$ 795.00



NEW!

## Commercial Tumbler Parts

### Complete Barrels

Includes barrel, lid, liner, lid gasket and fittings.

Shipping weight: 18 lbs., 26 lbs.

20 lb barrel #021-097 \$ 248.00

40 lb barrel #021-098 \$ 315.00

### Bases Only

Motor and barrels not included.

C100 Base - for use with 1 (20 lb) barrel

Shipping weight: 32 lbs.

#009-070 \$ 165.00

C200 Base - for use with either 1 (40 lb) or 2 (20 lb) barrels

Shipping weight: 41 lbs.

#009-071 \$ 185.00

### Replacement Barrel Liners

Molded neoprene blend for water based tumbling.

Moderate oil resistant. Not for use with solvents.

Shipping weight: 8 lbs.

20 lb barrel #240-007 \$ 148.00

40 lb barrel #240-008 \$ 148.00

### Replacement Lid Gaskets

Soft and pliable to seal securely.

Not for use with solvents. Shipping weight: 2 lbs.

20 lb barrel #240-017 \$ 21.50

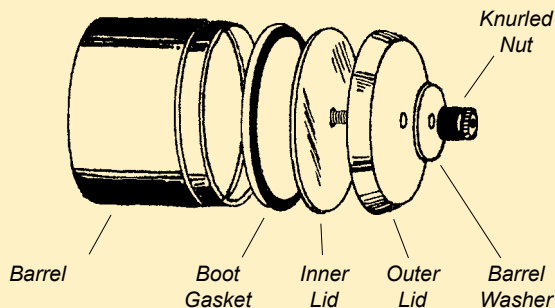
40 lb barrel #240-018 \$ 21.50

## Tumbler Parts

### Complete Barrels

Patented Lortone barrels made of long-wearing rubber and with our patented water tight seal. Ten-sided interiors on 4 lb. and larger models. Not for use with solvents or harsh detergents.

Barrel Model	Inside Depth	Inside Diameter	Shipping weight		
1.5 lb.	2 <sup>5</sup> / <sub>8</sub> "	3 <sup>7</sup> / <sub>8</sub> "	0.9 lb.	#020-090	\$ 18.90
3 lb.	4 <sup>1</sup> / <sub>8</sub> "	3 <sup>7</sup> / <sub>8</sub> "	1.1 lbs.	#020-091	\$ 23.05
4 lb.	3 <sup>1</sup> / <sub>2</sub> "	5 <sup>3</sup> / <sub>4</sub> "	2 lbs.	#020-092	\$ 35.70
6 lb.	3 <sup>5</sup> / <sub>8</sub> "	5 <sup>3</sup> / <sub>4</sub> "	3.2 lbs.	#020-093	\$ 48.30
12 lb.	7 <sup>1</sup> / <sub>2</sub> "	6 <sup>3</sup> / <sub>4</sub> "	5.5 lbs.	#020-094	\$ 62.50



### Knurled Nut

All barrels, shipping weight 2 oz.  
#481-070 \$ 1.90



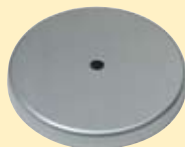
### Barrel Washer

All barrels, shipping weight 1 oz.  
#108-001 \$ 0.75



### Outer Lid

Shipping weight 6 oz.  
1.5 lb. / 3 lb. #020-001 \$ 4.15  
4 lb. #020-002 \$ 6.75  
6 lb. / 12 lb. #020-003 \$ 8.75



### Inner Lid with Bolt

Shipping weight 4 oz.  
1.5 lb. / 3 lb. #020-100 \$ 3.30  
4 lb. #020-101 \$ 6.75  
6 lb. / 12 lb. #020-102 \$ 7.60



### Inner Lid Boot Gaskets

Shipping weight 3 oz.  
1.5 lb. / 3 lb. #240-010 \$ 3.20  
4 lb. #240-011 \$ 4.15  
6 lb. / 12 lb. #240-012 \$ 5.60



### Barrels Only

Just our patented barrels. No lids or gaskets.

1.5 lb	Ship weight 1 lb.	#240-001	\$ 8.90
3 lb.	Ship weight 2 lbs.	#240-002	\$ 10.30
4 lb.	Ship weight 2 lbs.	#240-003	\$ 18.05
6 lb.	Ship weight 4 lbs.	#240-004	\$ 28.35
12 lb.	Ship weight 6 lbs.	#240-005	\$ 41.80

### Tumbler Bearings

Shipping weight 2 oz		
1.5E, 3A closed end	#203-003	\$ 1.65
(3 required on 3A, 1.5e)		
1.5E, 3A open end	#203-004	\$ 1.65
(1 required on 3A, 1.5e)		
33B, 3-1.5, 45C	#203-010	\$ 0.70
QT6, QT12, QT66	#203-001	\$ 2.85
FD12, FD66, FD Add-A-Unit	#203-020	\$ 3.35
C-Series	#200-002	\$ 8.35



FD



33B,  
3-1.5, 45C



QT



C-Series

### Barrel Guides

Shipping weight 2 oz.		
45C	#004-010	\$ 2.80
QT6, QT12, QT66	#006-003	\$ 2.80
C-Series (roller only)	#203-920	\$ 2.00



C-Series

### Drive Belts

Shipping weight 2 oz.		
1.5E, 3A	#210-001	\$ 1.60
33B, 3-1.5, 45C	#210-002	\$ 1.85
QT6, QT12, QT66	#210-011	\$ 5.95



### Drive Motors

1.5E (3 lbs.)	#301-021	\$ 17.35
3A, 33B, 3-1.5, 45C (3 lbs.)	#301-034	\$ 21.55
QT6, QT12, QT66 (5 lbs.)	#301-030	\$ 50.40



Tumbling Kit includes:  
 STEP 1 - Coarse (60/90 grit)  
 STEP 2 - Med/Fine (120/220 grit)  
 STEP 3 - Aluminum Oxide Pre-Polish  
 STEP 4 - Aluminum Oxide Polish



### 4-Step Tumbling Kit

Quality abrasives and polish for a professional high gloss finish on up to 12 lbs. of rock.

Shipping weight: 5 lbs.

#590-030 \$ 19.90



**NEW!**

### Large 4-Step Kit

Polish More! Finish up to 60 lbs of rock with our extra-large 4-Step kit. We include 5 pounds each of the same abrasives and polish as our original 4-Step kit. Shipping weight: 26 lbs.

#590-032 \$ 82.00

### Tumbling Grade Silicon Carbide

Perfect for tumbling and general use, these mixed grades provide excellent results at low cost.

Grade	Best for	<u>1 lb.</u>	<u>5 lb.</u>	<u>50 lb.*</u>
46/70	Extra Coarse Tumbling	#591-051 \$ 4.45	#591-052 \$ 17.35	#591-053 \$ 65.00
60/90	Coarse Tumbling	#591-056 \$ 4.45	#591-057 \$ 17.35	#591-058 \$ 66.00
120/220	Med/Fine Tumbling	#591-066 \$ 4.45	#591-067 \$ 17.35	#591-068 \$ 66.00
3F (320/400)	Fine Tumbling	#591-081 \$ 7.60	#591-082 \$ 30.45	#591-083 \$ 162.00
		Ship wt: 1.1 lbs.	Ship wt: 5.75 lbs.	Ship wt: 55 lbs.*

### Lap Grade Silicon Carbide

Lapping and critical applications demand the precision of fine abrasives. Our closely graded grain delivers super consistent finishes and greatly reduces the chance of undercutting.

Grade	Best for	<u>1 lb.</u>	<u>5 lb.</u>	<u>50 lb.*</u>
80	Coarse Lapping	#592-046 \$ 4.75	#592-047 \$ 19.30	#592-048 \$ 87.15
220	Med/Fine Lapping	#592-051 \$ 5.15	#592-052 \$ 20.60	#592-053 \$ 96.60
320	Med/Fine Lapping	#592-061 \$ 7.05	#592-062 \$ 28.90	#592-063 \$ 162.75
400	Fine Lapping	#592-066 \$ 7.90	#592-067 \$ 31.50	#592-068 \$ 204.75
600	Fine Lapping	#592-076 \$ 10.60	#592-077 \$ 44.00	#592-078 \$ 288.75
800	Fine Lapping	#592-081 \$ 14.20	Ship wt: 5.75 lbs.	Ship wt: 55 lbs.*
1000	Pre-Polish	#592-086 \$ 16.80		
1200	Pre-Polish	#592-091 \$ 23.10		
1600	Pre-Polish	#592-096 \$ 29.40		
		Ship wt: 1.1 lbs.		

### Flat Lapping Tips

For best results, use graded abrasives to prevent undercutting. We recommend 220 grit for rough grind and 600 grit for fine grind. Final polish with Tin Oxide.





Select the right polish to get the best from your tumbler.  
Our polishes are milled to laboratory standards for the best performance.



## Aluminum Oxide Pre-Polish

This is an inexpensive alumina for use as a pre-polish in all tumblers. 5 microns.

## Aluminum Oxide Polish

An excellent low-cost tumbling polish which leaves little or no residue on stones. 1 micron.

## Cerium Oxide

Premium optical grade cerium for use on all quartz, agate, glass and obsidian. 1.5 microns.

## Tin Oxide

Recommended as a final polish for flat lapping. Good for metal/stone combinations.

## Chrome Oxide

Good on jade and colored stones. Green in color.

## Red Rouge

Use with walnut shell when tumbling jewelry and brass.

Polish	1 lb.	5 lb.	20 KG. (44 lbs.)
Al. Oxide Pre-Polish	#591-021 \$ 4.75	#591-022 \$ 18.90	#591-020 \$ 84.00
Al. Oxide Polish	#591-026 \$ 6.60	#591-027 \$ 27.30	#591-025 \$ 115.50
Cerium Oxide	#591-042 \$ 9.75	#591-043 \$ 43.05	#591-041* \$ 247.00
Tin Oxide	#591-038 \$ 19.20	#591-039 \$ 80.85	Ship wt: 48 lbs.
Chrome Oxide	#591-034 \$ 13.55	#591-035 \$ 57.75	
Red Rouge	#591-014 \$ 9.45	#591-015 \$ 40.15	* Requires additional shipping fee of \$6.00 per pail.
	Ship wt: 1.1 lbs.	Ship wt: 5.75 lbs.	

## Plastic Pellets

Use in the pre-polish and polish stages to cushion stones and help carry polish. Works well as a filler for small loads. Long wearing and reusable. Shipping weight 1 lb net: 1 lbs., 5 lb net: 5 lbs.

1 lb.	#591-091	\$ 4.95
5 lb.	#591-092	\$ 17.75



## Stainless Steel Shot

Rustproof jewelry mixture with a mirror polished surface. Includes flattened balls, diagonals & pins. 5 lbs. net.

Use with burnishing solution.

Shipping weight 1 lb net: 1 lbs., 5 lb net: 5 lbs.

1 lb.	#592-037	\$ 26.25
5 lb.	#592-038	\$ 131.25



## Metal Tumbling Media-Red

Excellent for polishing brass, bronze and gold in dry tumbling operations. Pre-impregnated with just the right amount of red jeweler's rouge for a super shine. 1 lb. net. Shipping weight 1 lbs.

#592-005	\$ 5.20
----------	---------



## Metal Tumbling Media-Green

Developed for polishing silver, nickel, and white metals in dry tumbling operations. Pre-mixed with chrome oxide to deliver great results. 1 lb. net. Shipping weight 1 lbs.

#592-010	\$ 5.60
----------	---------



## Burnishing Compound

High quality compound for bright finishes.

Use 1 Tbsp. per gallon of water.

Shipping weight 1 lb. net 1 lbs., 5 lb. net 7 lbs.

1 lb.	#592-032	\$ 8.40
5 lb.	#592-033	\$ 34.60



## Untreated Walnut Shell

For dry tumbling operations on metal or stone. Medium grind (1/16") for use with compounds. 5 lbs. net. Shipping weight 5 lbs.

#592-015	\$ 9.50
----------	---------



# ARBORS

Our Arbors are sturdy, durable and can be equipped with silicon carbide or diamond wheels, rubber expandable drums, or polish heads at either end. Choose any combination of accessories for the type of work you perform. Two, four or six wheel models are available. For the best in dependability, we use a rugged powder coat finish, sealed bearings with dirt slingers to protect the seal and welded motor mounts. The hinged top cover makes changing wheels easy while the 3/4" threaded shafts are tapped for 1/4-20 spin on polish heads. Includes 2 1/2" x 1 1/2" motor pulley.

## 6" Models



### BA62

A compact arbor for two wheels up to 6" in diameter. Stainless steel shaft. Wheels and motor are not included. Shipping weight 30 lbs.  
#035-090 \$ 198.00



### BA64

Holds four wheels up to 6" in diameter! Stainless steel shaft. Wheels and motor are not included. Shipping weight 30 lbs.  
#036-090 \$ 238.00



### BA66

Don't spend your time changing wheels! An extra long shaft and frame holds 6 wheels up to 6" in diameter. Plate steel shaft. Includes coolant squirter. Wheels and motor are not included. Shipping weight 36 lbs.  
#039-090 \$ 310.00

## 8" Models



### BA82

Lots of room for larger wheels.  
Holds two wheels up to 8" in diameter.  
Stainless steel shaft.  
Shipping weight 31 lbs.  
#037-090 \$ 238.00



### BA84

Use whatever wheels you like, this machine will hold them securely. Holds four wheels up to 8" in diameter.  
Stainless steel shaft.  
Shipping weight 36 lbs.  
#038-090 \$ 270.00



### NS8

Our heavy-duty 8" cast aluminum Arbor. Split design allows for easy bearing replacement. We use a  $\frac{3}{4}$ " stainless steel shaft and sealed bearings and mount them in our custom supports to reduce vibration.

Bolt this unit to any workbench and mount the motor from the rear or underneath. Complete with 3-step pulley and belt. 1/3 hp motor (#300-22) not included. Shipping weight 7 lbs.  
#040-090 \$ 225.00

### NS8-Long Shaft

Same as the NS8, but with a longer shaft extension. (8-1/4"). Plated steel shaft.  
Shipping weight 14 lbs.  
#040-060 \$ 225.00



### SS8 Splash Shield

A welded aluminum splash shield for use with the NS8 arbor. Comes with pan, shield, drain plug, and hold down brackets.  
Shipping weight 4 lbs.  
#074-090 \$ 51.00

### SS8 Tool Rest

Designed just for the SS8 splash shield.  
Shipping weight 1 lb.  
#070-092 \$ 27.00



SS8  
Splash  
Shield

SS8  
Tool Rest

**All Arbors require either an Overhead Water System (#075-097), Underwheel Water Fountain (#075-096), or separate water system.**



## Max-Pro 8C

This is our top of the line 8 inch lapidary arbor. Schools and professionals enjoy its two-wheel design and heavy steel construction. The top mounted motor makes the unit compact and saves valuable bench space. Complete and ready to run. Includes removable side enclosures, coolant tank with adjustable flow valves, cast aluminum polish head, 8" x 1-1/2" 100 grit grinding wheel, EX83 sanding drum with 400 grit belt and 1/3 hp motor with overload protection. Shipping weight 81 lbs., in two boxes.  
**#044-091 \$ 910.00**



## Max-Pro 8 Basic

A basic unit for those who want to add their own accessories. Same as the Max Pro but without the accessories. Motor not included. Shipping weight 43 lbs.  
**#044-090 \$ 545.00**

## GCD

Fast progression from rough grind to brilliant polish! Widely spaced centers make this the most effective and economical diamond capping unit available. Included with the unit are 2 plated diamond wheels and 4 resin bonded diamond belts mounted on expandable drums for fast grinding and shaping. Final polishing is accomplished on the cast aluminum polish head. Includes flexible lamp, coolant squirter and 1/3 hp motor. Shipping weight 69 lbs., in two boxes.  
**#046-091 \$ 1,350.00**



### Includes:

- 6" x 1 1/2" 100 & 600 mesh plated diamond wheels
- 600, 1200, 8000, and 14,000 mesh diamond belts
- 50,000 mesh diamond disc
- 6" x 1 1/2" expandable Drums (4)
- 6" cast polishing head
- Lamp
- Coolant squirter
- 1/3 hp motor with switch and cord





## Overhead Water System

With a newly updated design, our free-standing gravity feed water supply works with any lapidary arbor. Includes tank, valve, and tubing.

Shipping weight 4 lbs.

#075-097 \$ 36.80

## Moffatt Flexible Lamp

A flexible goose-neck lamp for adding light to your work area. Includes mounting bracket. 18" long neck, 6 ft. cord.

Shipping weight 3 lbs.

#340-003 \$ 56.00



## Underwheel Water Fountain

Supply coolant to all your wheels with our water fountain. Comes with tubing, spitter head and air pump.

Shipping weight: 1 lb.

#075-096 \$ 27.50



## Water Feed and Drain Kit (Not shown.)

All the water fittings, plastic tubing, and instructions for supply or drain for any arbor.

Shipping weight 1 lb.

#075-095 \$ 18.40

## Flat Laps

Our rugged vibrating laps are perfect for polishing slabs, geodes, bookends, clock faces, and other flat surfaces. Constructed with a heavy steel frame, rubber supported pans and cushioned adjustable feet. Each machine includes removable grinding and polishing pans.

### FL15

An easy to use lap. Includes 15" diameter grinding and polishing pans. Shipping weight: 44 lbs.

#030-091 \$ 540.00

### FL20

Supersize 20" pan with over 70% more polishing area than our FL15! Includes grinding and polishing pans. Shipping weight: 65 lbs.

#030-092 \$ 710.00



## Grinding Pans

Sturdy cast aluminum pan with bumper ring.

FL15 (6 lbs.) #030-108 \$ 74.00

FL20 (12.5 lbs) #030-114 \$ 144.00

## Polishing Pans

Use a separate polish pan to avoid contamination.

Cast aluminum pan with polish pad and bumper ring.

FL15 (6 lbs.) #030-107 \$ 78.75

FL20 (13 lbs.) #030-113 \$ 149.50

## Flat Lap Polish and Abrasive Kit

For a great shine. Includes 1 lb. each of 220 & 600 and Tin Oxide polish. Shipping weight: 4 lbs.

#590-033 \$ 33.60



## Replacement Polish Pads

Flat face synthetic pads for a great polish. Attach with rubber based contact cement. Ship weight 0.3 lbs.

FL15 #030-009 \$ 12.10

FL20 #030-012 \$ 14.70

## Replacement Lap Balls

Durable rubber. 3 required per lap.

Ship weight: 2 oz.

#208-001 \$ 3.15



## Replacement Springs

Custom wound spring steel. 3 required per lap.

Ship weight: 1 oz.

#213-001 \$ 2.20



## Expandable Drums

Drums expand when in use to hold sanding belts in place. Belts can be easily changed when stopped. Made from carefully formulated rubber and flexible enough to blend to the stone. Maximum rpm is 1750. Shipping weight 6": 3 lbs, 8": 5 lbs.



**CALL  
for  
availability**

Size	Uses Belt Size	
6" x 1-1/2"	1-1/2" x 18-15/16"	#073-011
6" x 2-1/2"	2-1/2" x 18-15/16"	#073-012
8" x 3"	3" x 25-7/32"	#073-014

## EX Drums

Lightweight, two-piece sanding drums with resilient foam rubber center ring. Remove the ring to change belts. The EX 625 is 6" dia, uses 2-1/2" x 18-15/16" belts. The EX 83 is 8" dia, uses 3" x 25-1/8" belts.

Shipping weight 6" 1 lb., 8" 1.5 lbs.



	EX 625	EX 83
Arbor	\$ 24.70	\$ 35.50
1/2"	#072-090	#072-095
5/8"	#072-091	#072-096
3/4"	#072-092	#072-097
1"	#072-093	#072-098

## Replacement EX Drum Rings

Interlocking dovetail joints for no glue lines!

Shipped flat. Shipping weight 2 oz.

EX 625 #072-001 \$ 5.10

EX 83 #072-011 \$ 6.30

## Telescopic Bushings

For expandable drums, grinding wheels, and diamond wheels. Adapts 1" dia center hole to 3/4", 5/8", and 1/2" shafts.

Shipping weight 2oz.

7/16" wide #511-002A \$ 1.50

15/16" wide #511-001A \$ 1.70

## Silicon Carbide Grinding Wheels

Our wheels are custom made in the US with the best high-purity silicon carbide. Green wheels are the cutting standard and have a soft bond to cut fast, stay cool and resist glazing. Black Wheels are a lower cost alternative with a medium bond and combine great cutting with long and dependable life. 1" arbor hole is bushed for 3/4", 5/8", 1/2" shafts. Shipping weight 6": 2 lbs., 8": 5.4 lbs.

### Green Wheels

Size	Grit		
6" x 1"	100	#500-042	\$ 40.45
6" x 1"	220	#500-043	\$ 40.45
8" x 1-1/2"	100	#500-052	\$ 72.45
8" x 1-1/2"	220	#500-053	\$ 72.45

### Black Wheels

Size	Grit		
6" x 1"	100	#500-072	\$ 32.55
6" x 1"	220	#500-073	\$ 32.55
8" x 1-1/2"	100	#500-082	\$ 54.60
8" x 1-1/2"	220	#500-083	\$ 56.70



## Wheel Dresser

Make grinding wheels run true again.

T-bar diamond head with aluminum handle.

By Lapcraft. Shipping weight 8 oz.

#566-010 \$ 31.00





## Spin-On Polish Heads

6" Lightweight, flexible molded polish heads with a 1/4-20 stud for threading into the end of most arbor shafts. Available with a plain 3/16" rubber face for use with sanding discs or with a felt top bonded to a 3/16" rubber for polishing.  
Shipping weight 8 oz.

**NEW!**

### Plain Rubber Face

**Right Hand** #025-060 \$ 16.50  
**Left Hand** #025-061 \$ 16.50

### With Felt on Rubber

**Right Hand** #025-065 \$ 19.00  
**Left Hand** #025-066 \$ 19.00



## Cast Aluminum Polish Heads

Our sturdy cast aluminum alloy heads are precision machined to run flat and true. 3/16" resilient rubber bonded to the face.

Specify right hand, left hand or straight bore with set screw.  
Shipping weight 6" 1 lb., 8" 2 lbs.



### Arbor

	6" Dia.	8" Dia.
	\$ 39.00	\$ 50.00
1/2" Straight Bore	#515-001	#515-021
1/2" RH Thread	#515-002	-N/A-
1/2" LH Thread	#515-003	-N/A-
5/8" Straight Bore	#515-004	#515-024
5/8" RH Thread	#515-005	#515-025
5/8" LH Thread	#515-006	#515-026
3/4" Straight Bore	#515-007	#515-027
3/4" RH Thread	#515-008	#515-028
3/4" LH Thread	#515-009	#515-029

## Replacement

### Sponge Rubber Discs

Shipping weight 8 oz.

6" #515-060 \$ 2.70  
8" #515-080 \$ 3.50

## Leather Polishing Discs

Suede leather delivers a brilliant final polish on stones or metal when charged with any of our popular buffing compounds. These discs have been the choice of professionals for many years. Shipping weight 2 oz.

Dia.	Part#	
6"	#509-001	\$ 3.90
8"	#509-002	\$ 5.40
10"	#509-003	\$ 8.80



## Felt Polishing Discs

This premium felt holds polish easily and doesn't dry out quickly. Soft and pliable, use it for a wide range of polishing applications. Shipping weight 2 oz.

Dia.	Part#	
6"	#508-001	\$ 3.10
8"	#508-002	\$ 4.60



## Silicon Carbide Sanding Belts

Silicon carbide is the long time standard and offers excellent value and lasting performance. Quality belts are custom made with butt joints for no bump. Waterproof backing with high density grit. Use wet. Shipping weight 1 oz. each

Grit	1 1/2 x 18 <sup>15</sup> / <sub>16</sub>	2 1/2 x 18 <sup>15</sup> / <sub>16</sub>	3 x 25 <sup>1</sup> / <sub>8</sub>	3 x 25 <sup>7</sup> / <sub>32</sub>
	\$ 2.35	\$ 2.70	\$ 3.40	\$ 3.40
100	#501-001	#501-011	#501-021	#501-041
220	#501-002	#501-012	#501-022	#501-042
320	#501-003	#501-013	#501-023	#501-043
400	#501-004	#501-014	#501-024	#501-044
600	#501-005	#501-015	#501-025	#501-045



## Silicon Carbide Sanding Discs

Use wet or dry. These superior quality discs are waterproof and made to exacting standards. Correct flex for smooth operation. PSA discs have permanent adhesive backing. Shipping weight 1 oz. each

Plain Discs		PSA Discs	
Grit			
	6"	6"	8"
	\$ 1.30	\$ 1.50	\$ 2.55
100	#505-001	#505-006	#505-016
220	#505-002	#505-007	#505-017
320	#505-003	#505-008	#505-018
400	#505-004	#505-009	#505-019
600	#505-005	#505-010	#505-020



## Eastwind Flexible Diamond Wheels

Eliminate scratching and flat spots with these foam-backed resin bond diamond wheels. Their advanced bonding technology lasts significantly longer than ordinary silicon carbide abrasives! Gentle pressure lets the surface flex while still cutting aggressively. 1" bore with bushing to fit most shafts. Must use with water. Shipping weight 6" 2 lb, 8" 3 lbs.

	6" x 1 1/2"	8" x 2"
Mesh	\$ 100.00	\$ 140.00
120	#507-001	#507-021
220	#507-002	#507-022
325	#507-003	#507-023
400	#507-004	#507-024
600	#507-005	#507-025
800	#507-006	#507-026
1,200	#507-007	#507-027
1,800	#507-008	#507-028
3,000	#507-009	#507-029
8,000	#507-010	#507-030
14,000	#507-011	#507-031
50,000	#507-012	#507-032
100,000	#507-013	#507-033



## Lapcraft Diamond Wheels

Packed with high quality diamonds in a metal bond for durability. These wheels feature tough nylon cores for reduced weight. The 1" ID is bushed for use on most arbors. Use water when grinding and always wear safety glasses. By Lapcraft. Do not exceed 2,000 RPM. Shipping weight 6" 3 lbs., 8" 4 lbs.

	6" x 1-1/2"	8" x 1-1/2"
Mesh		
60	#563-003 \$ 250.00	#563-010 \$ 330.00
80	#563-004 \$ 215.00	#563-011 \$ 280.00
100	#563-005 \$ 190.00	#563-012 \$ 255.00
180	#563-006 \$ 155.00	#563-013 \$ 220.00
220	#563-007 \$ 150.00	#563-014 \$ 215.00
360	#563-008 \$ 140.00	#563-015 \$ 200.00
600	#563-009 \$ 125.00	#563-016 \$ 175.00



## Lapcraft Diamond Compound

Concentrated diamond compound in color coded syringes for easy identification. Shipping weight 1 oz.



Mesh	1 gm	2 gm	5 gm
260	#563-064 \$ 6.00	#563-065 \$ 11.00	#563-066 \$ 22.00
325	#563-067 \$ 6.00	#563-068 \$ 11.00	#563-069 \$ 22.00
600	#563-071 \$ 6.00	#563-072 \$ 11.00	#563-073 \$ 22.00
1,200	#563-074 \$ 6.00	#563-075 \$ 11.00	#563-076 \$ 22.00
1,800	#563-077 \$ 6.00	#563-078 \$ 11.00	#563-079 \$ 22.00
3,000	#563-081 \$ 6.00	#563-082 \$ 11.00	#563-083 \$ 22.00
8,000	#563-084 \$ 5.00	#563-085 \$ 8.00	#563-086 \$ 18.00
14,000	#563-087 \$ 4.00	#563-088 \$ 5.00	#563-089 \$ 9.50
50,000	#563-091 \$ 4.00	#563-092 \$ 5.00	#563-093 \$ 9.50
100,000	#563-094 \$ 4.00	#563-095 \$ 5.00	#563-096 \$ 9.50

## Maxi-Mite Kit

Includes 1 gm of 600, 1200, 3000, 8000 and 2 gms of 14,000 and 50,000 plus 1/2 oz. Microsol Extender. Shipping weight 4 oz.

#563-098 \$ 28.00

## Extender Fluid

Special lubricant for use with diamond compound. 1 ounce bottle. Shipping weight 1 oz.

#563-063 \$ 4.50



## Lapcraft Diamond Polishing Spray

One full carat precisely graded diamond in 2 oz. pump spray bottles. Shipping weight 3 oz.

Mesh	
600	#562-059 \$ 9.00
1,200	#562-060 \$ 9.00
3,000	#562-061 \$ 9.00
8,000	#562-062 \$ 9.00
14,000	#562-063 \$ 9.00
50,000	#562-064 \$ 9.00
100,000	#562-065 \$ 9.00



## LORTONE DiBelts and DiPads

Resin treated fabric for use with diamond compound and extender fluid. Use on expandable drums and polish heads. 3 per package. Shipping weight 2 oz.

	DiBelts
6" x 1 1/2"	#502-051 \$ 10.50
6" x 2 1/2"	#502-052 \$ 13.50
8" x 3"	#502-054 \$ 20.00

	DiPads
6" Dia.	#502-061 \$ 12.50
8" Dia.	#502-062 \$ 16.50





## Diamond Sanding Belts & Discs

Diamond sanding belts require no messy compounds and last up to 50 times longer than conventional abrasives. Now get an extraordinarily smooth surface finish without messy compounds. Strong, flexible backings will not crack even after prolonged use. PSA discs have permanent adhesive backing. Must use with water. Shipping weight discs 3 oz., belts 4 oz.

	BELTS			DISCS	
	1 1/2 x 18 15/16	2 1/2 x 18 15/16	3 x 25 7/32	6" dia.	8" dia.
Mesh	\$ 38.00	\$ 53.00	\$ 79.50	\$ 33.00	\$ 54.00
120	#506-020	#506-035	#506-050	#506-065	#506-080
220	#506-021	#506-036	#506-051	#506-066	#506-081
325	#506-022	#506-037	#506-052	#506-067	#506-082
400	#506-023	#506-038	#506-053	#506-068	#506-083
600	#506-024	#506-039	#506-054	#506-069	#506-084
800	#506-025	#506-040	#506-055	#506-070	#506-085
1,200	#506-026	#506-041	#506-056	#506-071	#506-086
1,800	#506-027	#506-042	#506-057	#506-072	#506-087
3,000	#506-028	#506-043	#506-058	#506-073	#506-088
8,000	#506-029	#506-044	#506-059	#506-074	#506-089
14,000	#506-030	#506-045	#506-060	#506-075	#506-090
50,000	#506-031	#506-046	#506-061	#506-076	#506-091
100,000	#506-032	#506-047	#506-062	#506-077	#506-092



## LAPCRAFT Uncharged Polish Pads

Micro-Tex pads for mesh sizes 260-1800.  
Poly-Tex pads for mesh sizes 3000-50,000.  
Shipping weight 1 oz.

### Micro-Tex

#563-058 6" \$ 4.30  
#563-059 8" \$ 6.50

### Poly-Tex

#563-060 6" \$ 4.80  
#563-061 8" \$ 8.20



## Lapcraft Diamond Discs

A smooth-surface lap designed to quickly generate flat, highly polished surfaces.  
1/2" arbor hole and approx: 1/4" thick.  
Shipping weight 6" 2 lb., 8" 3 lbs.



Mesh	6" Dia.	8" Dia.
100	#563-020 \$ 125.00	#563-040 \$ 185.00
180	#563-021 \$ 95.00	#563-041 \$ 120.00
260	#563-022 \$ 90.00	#563-042 \$ 105.00
360	#563-023 \$ 85.00	#563-043 \$ 100.00
600	#563-024 \$ 75.00	#563-044 \$ 95.00
1200	#563-025 \$ 85.00	#563-045 \$ 105.00
1500	#563-026 \$ 85.00	#563-046 \$ 105.00
1800	#563-027 \$ 85.00	#563-047 \$ 105.00
3000	#563-028 \$ 95.00	#563-048 \$ 130.00

## Diamond Drills

Professional quality drills tipped with rapid cutting diamonds. 80 mesh, 1-3/8 in. long. Use coolant when drilling. 6 drills per package. Shipping weight 2 oz.

Drill (mm)	Size (in.)	Shank Dia. (in.)		
3/4	.030	0.023	#564-001	\$ 22.00
1	.040	0.024	#564-002	\$ 22.00
1 1/4	.050	0.036	#564-003	\$ 22.00
1 1/2	.060	0.044	#564-004	\$ 22.00
1 3/4	.070	0.044	#564-005	\$ 22.00
2	.080	0.044	#564-006	\$ 23.00
2 1/4	.090	0.044	#564-007	\$ 23.00
2 1/2	.100	0.044	#564-008	\$ 24.00
3	.120	0.044	#564-009	\$ 28.00
3 1/2	.140	0.044	#564-010	\$ 30.00
4	.160	0.044	#564-011	\$ 35.00



## Three-Pak Diamond Drill Kit

Includes one each of the 1 mm, 1 1/4 mm, and 1 1/2 mm drills.  
Shipping weight 2 oz.

#564-012 \$ 11.00

## Five-Pak Diamond Drill Kit

Includes one each of the 1 mm, 1 1/4 mm, 1 1/2 mm, 2 mm, and 2 1/2 mm drills. Shipping weight 2 oz.

#564-013 \$ 17.00

## Diamond Core Drills

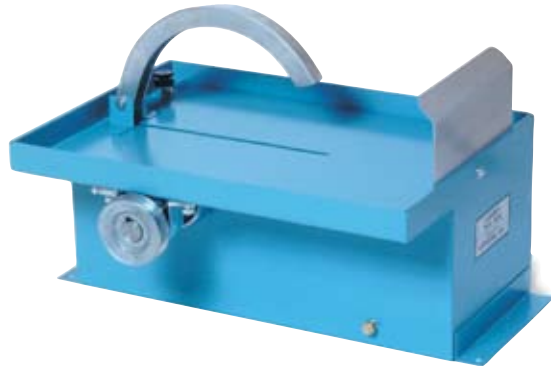
High strength plated diamond drills for fast cutting. Rust-proof plated steel shanks. Use coolant when drilling. Sized by outside diameter. Shipping weight 2 oz.

Size	RPM		
3 1/2 mm	4000	#564-015	\$ 20.00
1 1/4"	4000	#564-016	\$ 30.00
5/16"	4000	#564-017	\$ 31.00
3/8"	4000	#564-018	\$ 33.00
7/16"	4000	#564-019	\$ 35.00
1 1/2"	4000	#564-020	\$ 38.00
9/16"	2000	#564-021	\$ 40.00
5/8"	2000	#564-022	\$ 42.00
11/16"	2000	#564-023	\$ 46.00
3/4"	2000	#564-024	\$ 48.00
13/16"	2000	#564-025	\$ 52.00
7/8"	2000	#564-026	\$ 55.00
1"	2000	#564-027	\$ 60.00
1 1/16"	1500	#564-028	\$ 65.00
10 mm	4000	#564-029	\$ 35.00
3 3/8"	500	#564-030	\$ 175.00



# TRIM SAWS

Trim saws cut slabs into workable shapes and remove excess material from around mineral specimens. Cuts are made by pushing the material through by hand. Our rugged, welded steel saws are available in 8" or 10" models. Use water-based or oil coolants.



## TS8

This economical, heavy-duty trim saw has a 10-1/2" x 15" work surface and centered blade. Includes a sealed ball bearing arbor, arbor pulley, splash shield, 3/4" steel shaft, blade guard and belt guard. Requires 2 quarts of cutting oil. Motor, blade, and belt not included. Shipping weight 18 lbs.

#051-090 \$ 205.00



## TS10 *New!*

This 10" heavy-duty trim saw features an all new stainless steel design. The worktable has a 10-1/2" x 15" work surface and centered blade. Includes a sealed ball bearing arbor, arbor pulley, 3/4" steel shaft, and blade guard.

Requires 2 quarts of cutting oil.

Motor, blade, and belt not included.

Shipping weight 18 lbs.

#059-090 \$ 315.00

**Blades** - See pages 24 & 25



## LU6X-130 Combination Saw & Arbor

Our most versatile saw combines the best features of a trim saw and an arbor in one easy-to-use machine. Great for those getting started or who don't have room for multiple machines. New upgrade features a stainless steel shaft.

Includes a 6" diamond blade, a 6" x 1" 100-grit grinding wheel, sanding drum, spin-on polish disc with felt pad, sanding belts (220, 400, and 600), 1/3 hp motor, hood, and trim vise.

We also include templates, scribes, cerium oxide polish, dop wax, and dop sticks.

Use with an Overhead Water System (#075-97) or other water source.

Saw requires 2 quarts coolant. Shipping weight 57 lbs, in two boxes.

#061-092 \$ 630.00

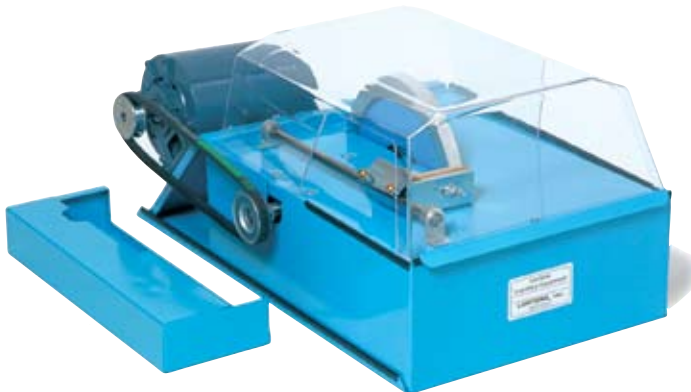


## LU6X Basic

Basic frame with arbor shaft. No blade or accessories.

Shipping weight 35 lbs.

#061-090 \$ 330.00



## FS8-C

This 8" saw is perfect for those desiring the capacity of a larger saw in an easy-to-clean design. We made the work table larger and kept the removable coolant pan. Includes vise, hood, 1/3 hp motor, and 8" x .032" diamond blade.

Requires 4-1/2 quarts of coolant (use oil for best results).

Shipping weight 67 lbs., in three boxes.

#056-093 \$ 555.00



## FS8 Basic

The basic unit without blade, motor, vise, or hood.

Shipping weight 48 lbs.

#056-092 \$ 340.00

## Hoods

Clear plastic hoods help keep your work area clean by reducing mist and overspray. Side cutouts allow easy access. Sized to fit LORTONE trim saws.

LU6X #074-092 \$ 43.00

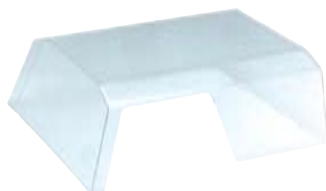
Shipping weight: 2 lbs

FS8 #074-095 \$ 55.50

Shipping weight: 4 lbs

TS8 #074-091 \$ 43.00

Shipping weight: 3 lbs



## Vises

Rigid trim saw vise guides the stone and helps reduce cutting effort. Mounts directly to the saw table. Shipping weight: 3 lbs

LU6X #071-091 \$ 36.50

FS8/TS10 #071-097 \$ 36.50

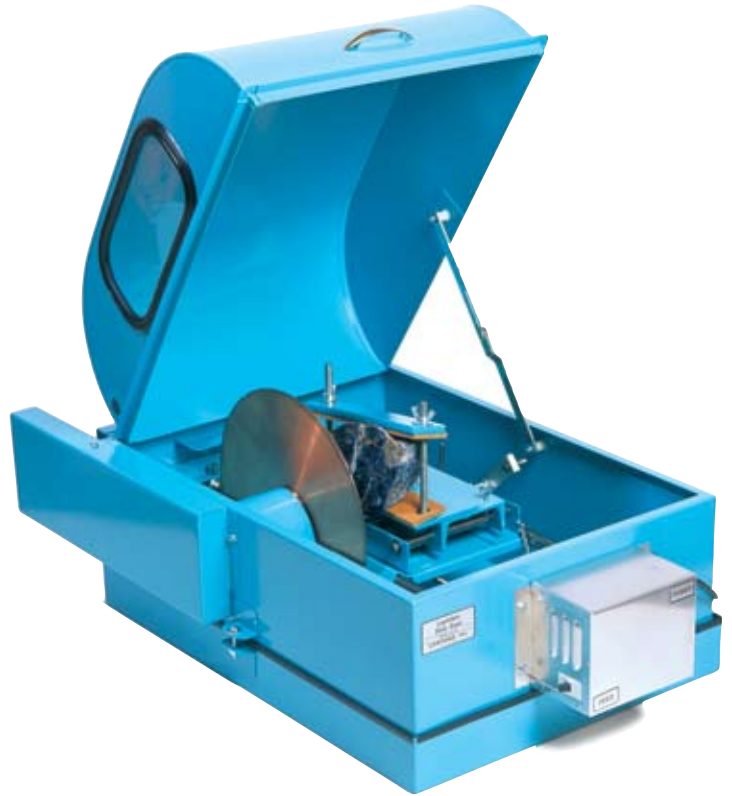
TS8 #071-093 \$ 36.50



# SLAB SAWS

Slabbing is the first step in exposing the natural patterns, colors and beauty of the stone.

Lortone slab saws are meticulously designed and constructed for long life and ease of operation. Several configurations from 12" to 18" are available. Choose a saw with a blade at least three times as large as the material you wish to cut. We designed our saws for use with oil as a coolant to deliver the best in cutting speed and life.



## LS12C

This quiet, fully enclosed, professional quality 12" saw is a real workhorse. It features a dependable fixed rate power feed of 8 inches per hour and a large capacity vise which can hold up to 5" x 6-1/2" rough. The cross feed allows several cuts without repositioning.

The full hinged hood keeps oil mist contained and comes with a tempered safety glass window for easy viewing. The coolant pan is detachable for cleaning. Requires 2 gallons of cutting oil. Complete with 12" x .062" x 5/8" diamond blade and 1/3 hp motor with overload protection.

Shipping weight: 152 lbs., in two boxes.  
Shipped by Motor Freight Only.

#053-093 \$ 1,210.00

## LS12 Basic

Same as above, less motor and blade.  
Shipping weight: 133 lbs.  
Shipped by Motor Freight Only.

#053-090 \$ 1,055.00



## PANTHER LSS-14P

This 14" high performance saw delivers straight, smooth cuts at twice the speed of our standard saw. Its quiet, clean, bench top design increases your cutting capacity without taking up extra space.

Includes our precision, true-machined flange for minimal blade runout and the ultimate in secure blade mounting.

Built with a fast fixed rate power feed to deliver cuts at 15 inches per hour. Double-sealed high performance bearings, a rugged 5" x 6-1/2" capacity vise, and threaded cross feed are all standard.

Requires 2-1/2 gallons of cutting oil.  
Equipped with a 14" x 5/8" blade,  
1/2 hp overload protected motor  
and blade sharpener.

**FAST  
FEED RATE**

(Allow 6 - 8 weeks for delivery)  
Shipping weight: 170 lbs. in two boxes.  
Shipped by Motor Freight Only.  
**#058-090 \$ 1,625.00**



### **Precision Blade Mount**

We use a fixed, precision machined flange to minimize blade runout and provide the ultimate in secure blade mounting.

Standard on LS12 and LSS14P.  
Stainless steel shaft and flanges in  
2007 Models!



### **Lortone Premium Lapidary Cutting Oil**

Low viscosity and proper lubrication to extend blade life and improve cutting. This oil has no smell, is less irritating, and cleans up easier. Recommended for all oil-based saws. 1 Gallon.  
Shipping weight: 8 lbs.  
**#086-010 \$ 19.95**



### **Blade Dressing Sticks**

Keep your blade in top shape! Sharpen diamond blades and remove built up cutting glaze to expose new diamond edges for better performance. Aluminum oxide sticks are faster and more effective than using red brick or obsidian. Sticks are 4" x 3/4" in size. Package of 3.  
Shipping weight: 1 lb.  
**#566-012 \$ 14.70**



**Blades - See Pages 24 & 25**

## LS18

This rugged, accurate, economical 18" slab saw is perfect for commercial cutting operations as well as home workshops.

Its front loading free-standing design allows it to go next to a work bench while the hinged hood makes loading and setup simple. Safety glass side window permits monitoring of the cut.

The frame, drive guard, and tank are constructed of heavy gauge welded steel for years of trouble-free performance. Slabs material up to 7" x 7" cleanly and easily. The feed rate is adjustable from 9-1/2 to 19-1/4 inches per hour by easily changing pulley ratios.

Standard features include: shutoff switch, threaded crossfeed, 3/4" arbor, and 2" drain. Shipped complete, assembled, and ready to use with a high performance 18" x .125 x 3/4" blade, and 1/2 hp heavy duty overload protected motor. Requires 3-1/2 gallons of cutting oil.

Shipping weight: 225 lbs.  
Shipped by Motor Freight Only.  
**#055-090 \$ 3,250.00**



Diamond Blades - page 24 & 25  
Cutting Oil - page 23  
Clamps - page 23  
Dressing Sticks - page 23

Proper accessories help make your saw perform better and last longer.

Clamps increase the versatility of any saw vise and allow you to produce slabs down to the last end. Choose the right coolant for your saw to help get smoother cuts and longer blade life.

## LRG-1 Rock Clamp

The most durable clamp we make! A heavy steel pivoting top bar gives incredible strength and holding power. Electro-plated for rust protection. Adjustable screws hold almost any geode half. Opens to 5" with the jaw horizontal. Bolts directly to all LORTONE Slab Saws. Shipping weight: 4 lbs.

#071-095 \$ 59.00

## Gator Jaw

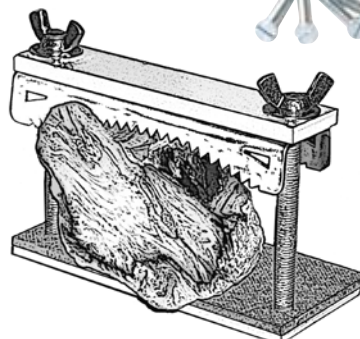
Solves those tough holding problems!

Heavy stainless steel construction and custom tooth design for incredible holding power. Fits LS12 and LSS14P Slab Saws.

Works best as an alternative to the stock top jaw.

Shipping weight: 4 lbs.

#071-094 \$ 29.50



## Small Clamp

A smaller version of our sturdy clamp. Sized to work well in trim and slab saws. 2-1/2" opening. Shipping weight: 1 lb.

#049-060 \$ 18.50

## Large Clamp

The best way to hold large remnants or geode halves for slabbing. Machined aluminum jaws with two sizes of hold down grooves. Gold anodized for protection. 5" max opening. Shipping weight: 3 lbs.

#049-050 \$ 35.00



## Lortone Premium Lapidary Cutting Oil

Low viscosity and proper lubrication to extend blade life and improve cutting.

This oil has no smell, is less irritating, and cleans up easier. Recommended for all oil-based saws. 1 Gallon.

Shipping weight: 8 lbs.

#086-010 \$ 19.90



## Oil Additive

Long polymer hydrocarbons reduce blade friction and oil fogging. 16 fl. oz. bottle treats 5 gallons of petroleum based oil. Not for use with water soluble oils. Shipping weight: 2 lbs.

#086-020 \$ 9.95

## Tool Cool

Use in trim saws when cutting with water to inhibit rust. Also great for drilling and with diamond wheels. Will not discolor stones and can be reused. An 8 oz. bottle mixes with 1 gallon of water. *Not recommended for use with slab saws or with blades larger than 8".*

Shipping weight: 1 lb.

#563-001 \$ 4.50



## Blade Dressing Sticks

Keep your blade in top shape!

Sharpen diamond blades and remove built up cutting glaze to expose new diamond edges for better performance. Aluminum oxide sticks are faster and more effective than using red brick or obsidian. Sticks are 4" x 3/4" in size. Package of 3.

Shipping weight: 1 lb.

#566-012 \$ 14.70



## MK 303 Blades

Professional grade continuous rim blades for lapidary materials. The MK-303 produces smoother cuts and is used for cutting rare and valuable materials when waste must be held to a minimum and speed of cut is essential. The Professional series diamond blades last longer and will cut faster than ordinary notched-rim or plated-diamond blades. Made in the U.S.A. Sized by rim thickness.



<u>Dia.</u>	<u>Rim Width</u>	<u>Arbor Size</u>	<u>Ship Weight</u>		
4"	.020	1/2"	1 lb	#522-003	\$ 46.00
4"	.020	5/8"	1 lb.	#522-004	\$ 46.00
6"	.020	1/2"	1 lb.	#522-032	\$ 52.00
6"	.020	5/8"	1 lb.	#522-033	\$ 52.00
6"	.032	5/8" B1/2"	1 lb.	#522-039	\$ 56.00
8"	.032	5/8" B1/2"	1 lb.	#522-047	\$ 68.00
10"	.050	5/8" B1/2"	2 lbs.	#522-061	\$ 99.00
12"	.065	5/8" B1/2"	3 lbs.	#522-065	\$ 182.00
14"	.070	1" B3/4" B5/8"	5 lbs.	#522-071	\$ 207.00
18"	.085	1" B3/4"	8 lbs.	#522-080	\$ 326.00
20"	.100	1" B3/4"	10 lbs.	#522-085**	
24"	.100	1" B3/4"	12 lbs.	#522-090**	

\*\*Non-stock item. Call for pricing and delivery.

### Select the proper blade!

Choose the right blade for the type of cutting you do. Material properties, machine characteristics and coolant type will influence blade choice. Delicate trim work or valuable material requires thin blades. Use a thicker blade when material loss is not as important or where extra durability is required.

### Select the proper coolant!

Make sure the coolant you choose is compatible with your equipment. If you're not sure, ask the manufacturer. Oil is the best coolant for long life and fast cutting, and is essential for slabbing large sections or hard material. Water offers reduced odor and easier cleanup than oil but at a loss of blade performance and life. Use water for oil-sensitive materials, thin sections, and soft materials.

### Notched Rim Blades

Notched Rim Blades are extremely durable and suitable for both trimming and slabbing. Select diamond is furnace bonded in notches around the rim to help carry coolant, allow easy flushing of the cut, and reduce side friction.



A fast-cutting premium blade in a notched rim design. More notches let these blades run at higher RPM and feed rates than standard blades. Use with quality lapidary cutting oil only. Sized by core width.

Dia.	Core Width	Arbor Size	Ship Weight		
6"	.025	5/8" B <sup>1</sup> / <sub>2</sub> "	1 lb.	#525-039	\$ 79.00
8"	.040	5/8" B <sup>1</sup> / <sub>2</sub> "	1 lb.	#525-047	\$ 101.00
10"	.040	5/8" B <sup>1</sup> / <sub>2</sub> "	2 lbs.	#525-061	\$ 131.00
12"	.040	5/8" B <sup>1</sup> / <sub>2</sub> "	3 lbs.	#525-065	\$ 203.00
14"	.050	1" B <sup>3</sup> / <sub>4</sub> " B <sup>5</sup> / <sub>8</sub> "	5 lbs.	#525-071	\$ 265.00
18"	.085	1" B <sup>3</sup> / <sub>4</sub> "	8 lbs.	#525-080	\$ 415.00

\*Non-stock item. Special order only.

### Plated Rim Blades

Plated rim blades contain diamond bonded to the core along the entire cutting edge. They cut aggressively with less pressure and are good for expensive materials where it's desirable to keep kerf loss to a minimum. The thin cores mean these blades flex easily but can be damaged by excessive pressure. Not for slabbing or power feed saws.

#### DIA-LASER

A plated trim saw blade for fast, thin cuts. Stainless steel construction won't rust when used in water.

Sized by core width and arbor size.

Shipping weight 1 lb.

Dia.	Core Width	Arbor Size		
4"	.004	1/2"	#529-001	\$ 25.00
4"	.004	5/8"	#529-002	\$ 25.00
4"	.012	1/2"	#529-003	\$ 25.00
4"	.012	5/8"	#529-004	\$ 25.00
5"	.012	1/2"	#529-013	\$ 27.00
5"	.012	5/8"	#529-014	\$ 27.00
6"	.006	1/2"	#529-030	\$ 29.00
6"	.006	5/8"	#529-031	\$ 29.00
6"	.012	1/2"	#529-032	\$ 29.00
6"	.012	5/8"	#529-033	\$ 29.00
6"	.025	1/2"	#529-037	\$ 32.00
6"	.025	5/8"	#529-038	\$ 32.00
8"	.012	5/8"	#529-042	\$ 44.00
8"	.025	5/8"	#529-043	\$ 44.00

#### PRO-SLICER

An excellent trim saw blade for ultra-thin cuts.

A continuous exposed layer of plated diamond cuts very aggressively. For use with oil or water.

Sized by core width and arbor size.

Shipping weight 1 lb, 2 lbs for 10" dia.

Dia.	Core Width	Arbor Size		
4"	.004	1/2"	#528-001	\$ 26.00
4"	.004	5/8"	#528-002	\$ 26.00
4"	.012	1/2"	#528-003	\$ 26.00
4"	.012	5/8"	#528-004	\$ 26.00
6"	.006	1/2"	#528-030	\$ 32.00
6"	.006	5/8"	#528-031	\$ 32.00
6"	.012	1/2"	#528-032	\$ 32.00
6"	.012	5/8"	#528-033	\$ 32.00
6"	.025	1/2"	#528-037	\$ 36.00
6"	.025	5/8"	#528-038	\$ 36.00
8"	.012	5/8"	#528-042	\$ 46.00
8"	.025	5/8"	#528-043	\$ 46.00
10"	.032	5/8"	#528-060	\$ 64.00

## Specialty Saws

### Gryphon™ Diamond Band Saw

Save time and money by virtually eliminating the grinding of excess material. This unique saw smoothly cuts intricate shapes in softer stones and agate up to 3/16" thick. It also performs exceptionally well on glass and ceramic tile. The entire 12" x 12" work surface lifts off for easy access to the water reservoir. Complete with 180 mesh diamond blade. Shipping weight: 18 lbs.

#553-015 \$ 410.00

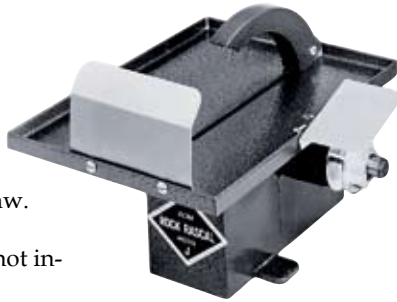


Fusers Blade #301F - Quality replacement blade	#553-025	\$ 58.00
Blade Duo-Pack #301BD	#553-023	\$ 97.50
Replacement Blade Guides 3-Pack	#553-024	\$ 6.00

### Rock Rascal Model J

An affordable, compact 6" trim saw. Made of rugged cast aluminum. Requires 6" x 1/2" Blade. Motor not included. Shipping weight 6.3 lbs.

#551-020 \$ 126.00



### Rock Rascal Tiny Trim Saw

Compact 4" trim saw with a durable cast aluminum body. Includes a 4" x .012" x 1/2" Pro Slicer blade. Shipping weight 11.2 lbs.

#551-030 \$ 246.00

### Rock Rascal Model T Gem Maker

Includes a 6" x .025" x 1/2" Pro Slicer blade, 6" x 1" 100 grit Silicon Carbide grinding wheel, polishing head, wet/dry 220-grit disc, and a felt polishing pad. Motor not included. Shipping weight 11.3 lbs.

#551-022 \$ 276.00



### Model V Vise

Fits Rock Rascal Models J and T. Shipping weight 1.3 lbs.

#551-021 \$ 23.00



## Vibratory Tumblers

Vibrating tumblers polish by moving the media against the stone in a circular fashion. Compared to rotary tumblers, they won't round the corners as well but hold the overall shape of the stone better. Their open top design allows you to inspect the stones while in progress.

### TV-5 Kit

Durable and simple to operate, the Tumble-Vibe 5 will process about 4 lbs of rock or 2 dozen ring castings. It works well for the beginner or experienced jeweler and has satisfied thousands of users.

TV-5 Starter Kit comes complete and ready to operate with a motorized base, an extra bowl, and all the compounds necessary for accomplishing the grinding step through the final polish step of most gemstones. Use one bowl for grinding and the other for polish to reduce the possibility of contamination. Shipping weight 17 lbs.

#551-037 TV-5 with stone finishing Kit \$ 144.95

#551-035 TV-5 tumbler \$ 104.95



### Replacement Stone Finishing Kit

Designed for Agates and other hard stones. Will finish 8-10 lbs rock. Stone finishing kit includes: Silicone Carbide (100/120), Silicon Carbide (700F), Iolox 50, and Raybrite TL. Shipping weight 9 lbs.

#551-039 Stone finishing Kit \$ 26.95

## UV Lights



### Versalume by Raytech

The most versatile & powerful portable ultraviolet lamp on the market today. This popular portable lamp boasts 33% more UV output than competitive models and incorporates Raytech's exclusive lifetime filters.

Longwave & Shortwave!

Model PP-FLS 4 full watts of UV power in a light-weight compact construction. Works with four "AA" batteries or the included 115V A/C adapter. Story of Fluorescence included. CE.

Shipping weight 2 lbs.

#551-040 PP-FLS \$ 84.95

#551-042 Story of Fluorescence Book \$ 2.95

### Dop Wax

Green #2 wax for general dopping.  
Has a strong grip and softens at 150°F.  
Each one pound box contains four  $\frac{5}{8}$ " x  
10" long sticks.  
Shipping weight 2 lbs.  
#588-010 \$ 11.00



### Electric Dop Pot

A simple and effective dop pot with replace-  
able copper pan. Ceramic heater maintains the  
proper dop wax temperature without flame.  
Model D by Rock Rascal.  
Shipping weight 1.3 lbs.  
#551-023 \$ 54.00



### Replacement Copper Dop Pan

Fits electric dop pot. Shipping weight 6 oz.  
#551-024 \$ 11.00

### Dop Sticks

Sturdy,  $\frac{5}{16}$  dia. hardwood dop sticks, 3"  
long. Ideal for dopping stones.  
Each pack contains 24 sticks.  
Shipping weight 3 oz.  
#550-011 \$ 7.60



### Alcohol Lamp

Glass lamp for dopping stones. Lamp remains  
stable when tipped. Use with denatured  
alcohol.  $\frac{3}{16}$ " cotton wick.  
Shipping weight 9 oz.  
#550-025 \$ 7.10



### Replacement Wicks

For Alcohol lamp, each. Shipping weight 2 oz.  
#550-026 \$ 0.75

### Scribes

Easily mark slabs for trimming.  $\frac{1}{16}$ " diameter x 6"  
long. Package of six. Shipping weight 2 oz.  
Aluminum #120-001 \$ 5.95  
Brass #120-002 \$ 6.35



### Templates

A complete selection of compact aluminum templates for marking  
cabochons. Color anodized for easy identification with stamped  
markings in mm.  
Set of five, each measures 3" x 4".  
Shipping weight 2 oz.  
#549-010 \$ 8.00

Set Includes:

Cross,  
Small & Large Ovals,  
Circles, Standard Coins  
Squares and Rectangles





## OptiVISOR!™

The best made precision magnifier around. It improves vision and leaves both hands free. Padded headband with tilt visor adjusts to all head sizes and fits over glasses easily. Available in five levels of magnification. Replacement lenses available. Shipping weight 1 lb.

Model	Magnifies	Focal Length	Optivisor	Replacement Lens
DA-2	1½ X	20"	#582-001 \$ 40.10	#582-012 \$ 24.50
DA-3	1¾ X	14"	#582-002 \$ 40.10	#582-013 \$ 24.50
DA-4	2 X	10"	#582-003 \$ 40.10	#582-017 \$ 24.50
DA-5	2½ X	8"	#582-004 \$ 40.10	#582-014 \$ 24.50
DA-7	2¾ X	6"	#582-005 \$ 41.60	#582-015 \$ 25.75
DA-10	3½ X	4"	#582-006 \$ 41.60	#582-016 \$ 25.75



## Optiloupe

Attaches to Optivisors, and adds 2½ power magnification. Shipping weight 2 oz. #582-010 \$ 9.00



## OPTI-PACK™ Hand Lens

Handy pocket magnifier in slide-out case. Shipping weight 2 oz. 3x power #582-007 \$ 6.55 4x power #582-008 \$ 6.55 5x power #582-009 \$ 6.55



## Jeweler's Hand Loupe

10x loupe with large 18mm double lenses for distortion-free viewing. Working distance is 1". Made in Japan. Shipping weight 2 oz. #582-030 \$ 15.00



## Double Lens Loupe

Two lenses in a single loupe, 12x total. Front lens detaches when not needed. Working distance is 1½" and 2½". Made in Japan. Shipping weight 2 oz. #582-011 \$ 9.00



## Shop Apron

Invaluable for use in the shop, this heavy duty vinyl apron cleans easily and ties in back. Shipping weight 8 oz. #550-040 \$ 5.50



## Stone Holders

Spring loaded with retractable wire jaws for holding gems or other small items for examination. Available in 3 or 4 prong. Shipping weight 2 oz.

3 prong, 5" length #551-076 \$ 2.80  
4 prong, 5" length #551-077 \$ 2.80  
3 prong, 2¼" length #551-078 \$ 2.50  
4 prong, 2¼" length #551-079 \$ 2.50



## Soldering Tweezers

Durable cross-locking tweezer features polished steel straight jaws. Heat resistant fiber grips hold work securely. Overall length is 6". Shipping weight 2 oz. #551-072 \$ 3.70



## Pocket Sliding Brass Gauge

Get accurate stone measurements. Features notched jaws for outside measurements, 1/10 vernier for accuracy and measure to 80 mm (3"). Shipping weight 2 oz. #551-075 \$ 6.95



## Deluxe Brass Gauge

Deluxe model offers metal underplate for quick, accurate stone measurements. Notched jaws, 1/10 vernier, measures to 80 mm (3"). Shipping weight 2 oz. #551-074 \$ 7.95



## Third Hand

Positioning work for soldering or gluing is made easier with the Third Hand. Choose from two styles, each with a heavy, non-tipping base. Shipping weight 2 lbs.

Double Third Hand #551-068 \$ 13.50  
Single Third Hand #551-070 \$ 9.50





Designed for professionals, Olympic buffers offer matchless durability, value, and performance. Solidly constructed of heavy gauge steel & powder coated for long life, our polisher features built-in lighting for increased visibility, making work more productive and comfortable. Filter replacement and metal reclamation are simple with the removable hood.

**Olympic 10**

Keep your work area clean while not taking up a lot of bench space. The high efficiency axial fan and filter effectively captures residue and particles. Complete with 1/3 hp, 3450 rpm Baldor motor and 1/2" tapered spindles. For buffs 6" dia. or smaller. Measures 16" deep, 24" wide, and 12" high. Shipping weight 56 lbs., in two boxes.

#080-095 \$ 405.00



**Replacement Filter**

Pleated for better efficiency than fiberglass filters. Shipping weight 2 lbs.

#265-001 \$ 8.30



**Compact Jewelry Polisher**

Polish your jewelry to a professional finish with the Lortone portable jewelry polisher. Comes complete with 1/15 hp motor, foot operated variable speed control to 5,000 rpm, 1/4" tapered spindles and accessory package. Accepts up to 3" dia. buffs. Shipping weight 10 lbs.

#080-093 \$ 149.00

**Tapered Spindles \$ 7.95**

Easy thread taper fits all straight shaft motors. Shipping weight 4 oz.

Shaft Dia.	Left Hand	Right Hand
1/4"	#280-011	#280-010
1/2"	#280-024	#280-025



**Combed Finex Muslin with Leather Centers**

For high-lustre applications. Long lasting leather centers. Shipping weight 4 oz.

Dia.	Ply	Rows		
3"	35	3	#510-030	\$ 2.40
4"	40	3	#510-031	\$ 2.90
5"	45	3	#510-032	\$ 4.00
6"	50	4	#510-033	\$ 5.50



**Combed Finex Muslin**

Closely-woven with shellac centers for strength. Produces high gloss when used with rouge. Ship weight 4 oz.

Dia.	Ply	Rows		
3"	45	3	#510-020	\$ 2.65
4"	50	4	#510-021	\$ 3.00
5"	55	5	#510-022	\$ 4.80
6"	60	6	#510-023	\$ 7.40



**Muslin**

A good, economical buff. Muslin with shellac centers. Use with cutting and abrasive compounds. Shipping weight 4 oz.

Dia.	Ply	Rows		
3"	35	3	#510-010	\$ 2.30
4"	42	3	#510-011	\$ 2.75
5"	45	3	#510-012	\$ 3.60
6"	50	4	#510-013	\$ 5.15



**Cotton Flannel**

Soft buff with shellac center for use with rouge. Shipping weight 4 oz.

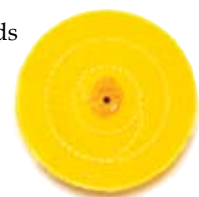
Dia.	Ply	Rows		
3"	30	3	#510-050	\$ 4.00
4"	30	3	#510-051	\$ 4.60
5"	30	3	#510-052	\$ 5.45
6"	30	4	#510-053	\$ 6.70



**Yellow Treated Muslin**

Resists fuzzing & separation to hold compounds better. With shellac center. Ship weight 4 oz.

Dia.	Ply	Rows		
3"	30	3	#510-040	\$ 2.60
4"	40	3	#510-041	\$ 3.70
5"	45	3	#510-042	\$ 5.35
6"	50	4	#510-043	\$ 7.90



**Fabulustre**

Used on all types of precious metals to remove light scratches. Produces a fast, mirror bright final finish without discoloration. Greaseless, leaving little or no residue for fast and easy cleanup.

Size	Ship weight		
1/4 lb. tube	6 oz.	#565-010	\$ 4.25
1 lb. tube	2 lb.	#565-011	\$ 8.45

**ZAM**

Formulated primarily for silver and turquoise jewelry as a final polish. Will not scratch soft stones such as turquoise. Leaves a high luster without residue and cleans up easily.

Size	Ship weight		
1/4 lb. tube	6 oz.	#565-015	\$ 4.25
1 lb. tube	2 lb.	#565-016	\$ 8.45

**Fabulustre Rouge Cloth**

A double cloth with one side impregnated with jeweler's rouge, and the other side used for a final polish or to keep the user's hands clean. 9" x 11".

Shipping weight 2 oz.  
#550-027 \$ 4.80

**Brown Tripoli**

A fine cutting abrasive for use on all metals where rouge will be used as a final polish. Leaves metals scratch-free, but dull in appearance. 3.5 oz. bar. Shipping weight 8 oz.

#270-001 \$ 2.90

**Red Rouge**

Used to produce the final high color and lustre on gold, silver and other soft metals. 5.4 ounce bar.

Shipping weight 8 oz.  
#270-002 \$ 4.10

**Attack Epoxy Solvent**

The preferred process for dissolving cured epoxy or polyester resins. Use to separate misaligned materials and clean cured resin from stones, metal, and glass.

Shipping weight 1 lb.

#588-024 \$ 10.50

**Bond 527 Cement**

Multi-purpose cement for all materials. Flexible, transparent, and quick drying. Shipping weight small 2 oz., large 5 oz.

1 ounce tube #588-001 \$ 2.55

3.2 ounce tube #588-002 \$ 4.30

**Opticon Fracture Sealer**

A unique resin which, when warmed, penetrates deep and seals small fractures. Use on both polished and unpolished stone surfaces. Shipping weight 1 lb.

#588-022 \$ 19.95

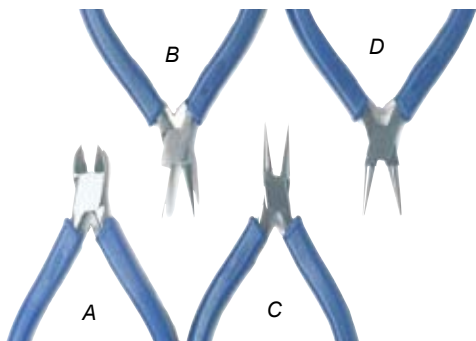
**Epoxy 330**

Fast setting two component water clear epoxy hardens in about one hour. Great for bonding stone to metal.

Shipping weight 2 oz.

#588-020 \$ 4.25

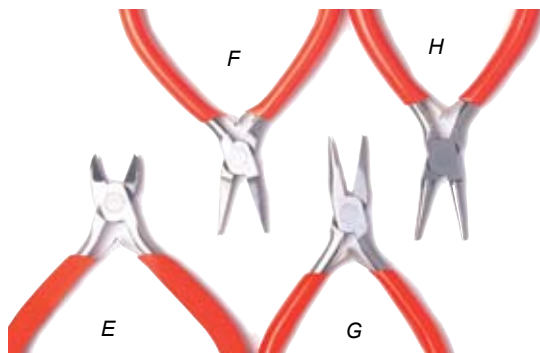




### RELENTLESS PLIERS

Preferred by professionals for fine jewelry work. They feature non-slip ergonomic handles, dual leaf springs, and precision box joints. 4 1/2" in length. Made in Germany. Shipping weight 3 oz.

(A) Side Cutter	#551-064	\$ 29.50
(B) Flat Nose	#551-062	\$ 22.50
(C) Chain Nose	#551-060	\$ 22.50
(D) Round Nose	#551-058	\$ 22.50



### MIRAGE PLIERS

Great quality and an economical price. Comfort-grip handles, leaf springs, and lap joints provide smooth action and long life. 4 3/4" in length. Made in China. Shipping weight 3 oz.

(E) Side Cutter	#551-056	\$ 7.80
(F) Flat Nose	#551-052	\$ 5.70
(G) Chain Nose	#551-050	\$ 5.70
(H) Round Nose	#551-054	\$ 5.70



### Piercing Saw Blades

Special alloy steel for cutting all metals, bone, pearl. Packages of 1 dozen. Shipping weight 1 oz.

Size	Thickness	Width		
8/0	.0063	.0126	#550-041	\$ 5.10
7/0	.0067	.0130	#550-042	\$ 4.70
6/0	.0070	.0140	#550-043	\$ 4.05
5/0	.0080	.0157	#550-044	\$ 3.80
4/0	.0086	.0175	#550-045	\$ 3.30
3/0	.0095	.0190	#550-046	\$ 3.30
2/0	.0103	.0204	#550-047	\$ 3.30
1/0	.0110	.0220	#550-048	\$ 3.30
1	.0120	.0240	#550-049	\$ 3.30
1 1/2	.0125	.0250	#550-050	\$ 3.30
2	.0134	.0276	#550-051	\$ 3.30
3	.0140	.0290	#550-052	\$ 3.30
4	.0150	.0307	#550-053	\$ 3.30
5	.0158	.0331	#550-054	\$ 3.55
6	.0173	.0370	#550-055	\$ 3.80
7	.0189	.0400	#550-056	\$ 4.35
8	.0197	.0440	#550-057	\$ 4.95



### Jewelers Saw Frame

Strongly constructed with flat steel frames, hardwood handles and thumb-screw locking devices. Imported. Shipping weight 8 oz.

#550-033 \$ 16.20



### Stone Setting Pliers

Sturdy box joint, bright chrome plated. 4 1/2" long. Shipping weight 4 oz.

#550-004 \$ 12.50





**Jarvi Ring Mandrels**

Made in the USA of hardened, polished tool steel with knurled handles for a better grip. Engraved ring sizes from 1 to 16 in  $\frac{1}{4}$  increments. They have a long, smooth taper to provide adequate work space and good balance.

**Ungrooved Ring Mandrel**

The ideal tool for forming, sizing, and shaping ring shanks. Shipping weight 2 lbs.

#552-011 \$ 21.00

**Grooved Ring Mandrel**

Use when working on stone-set rings when the stone might be damaged on a standard ring mandrel.

Shipping weight 2 lbs.

#552-012 \$ 22.00

**Flat-sided Ring Mandrel**

Flat sided Ring Mandrel for forming, straightening or enlarging bezel set rings. Can also be used in place of a grooved mandrel for faceted stones. Sizes 1-16, 13.5" long. Shipping weight 2 lbs.

#552-017 \$ 22.00

**Ring "Stretcher"**

Simple and economical tool for enlarging rings. Tapping the insert opens the mandrel and stretches the ring.

*Not to be used on stone set rings.* Shipping weight 1 lb.

#552-020 \$ 21.50

**Oval Bracelet Mandrel**

Made of cast iron smoothed and tapered for use in fabricating or enlarging bracelets.

Shipping weight 4 lbs.

#552-024 \$ 40.00

**Needle File Sets**

Remarkable quality and a great price.

#2 cut,  $5\frac{1}{2}$ " in length.

Shipping weight 12, 6 oz., 6, 3 oz.

Set of 12 #551-066 \$ 12.80

Set of 6 #551-067 \$ 7.10

**Needle File Handle**

Universal plastic handle holds files with just twist of the ring.  $3\frac{1}{8}$ " long. Shipping weight 2 oz.

#551-065 \$ 4.85

**Ring Sizer**

Accurate half sizes from 1-15.

Bright nickel finish.

Shipping weight 5 oz.

#550-083 \$ 11.50

**Bezel Pusher**

Grooved tip used for working bezels around stones. Shipping weight 2 oz.

#550-038 \$ 9.10

**Bezel Roller**

Half round head for rocking bezels into place.

$3\frac{1}{2}$ " long. Shipping weight 2 oz.

#550-037 \$ 4.20

**Prong Pusher**

Flat tip made especially to push in the prongs against the stone in a setting. Shipping weight 2 oz.

#550-039 \$ 3.80

**Curved Burnisher**

Polished curved tip for finishing stone settings. 2" long. Shipping weight 3 oz.

#550-020 \$ 9.00

**Straight Burnisher**

Straight polished tip for smoothing and finishing stone settings. 2" long. Shipping weight 3 oz.

#550-021 \$ 9.35

**Ring Clamp**

For holding rings securely while filing, polishing, stone setting or other operations.  $4\frac{1}{2}$ " long.

Shipping weight 4 oz.

#550-030 \$ 9.00

**Rawhide Mallet**

Finest quality shellacked rawhide. Strong hardwood handle, 6 oz. head.

Shipping weight 1 lb.

#550-022 \$ 24.00



Estwing is the world standard in geology tools. Whether you're a casual gem hunter or a professional geologist, we carry the right picks and chisels. Choose from pointed tip or flat blade styles.



### Pointed Tip Geologist Picks

Shipping weight 3 lbs.

14 oz. (E3-14P)	#583-011	\$ 37.00
22 oz. (E3-22P)	#583-012	\$ 38.50
22 oz. Long handle (E3-23LP)	#583-018	\$ 42.50
22 oz. Leather handle (E30)	#583-013	\$ 38.50

### Chisel Edge Geologist Picks

Shipping weight 3 lbs.

12 oz. (E3-12PC)	#583-014	\$ 36.60
20 oz. (E3-20PC)	#583-015	\$ 36.90
24 oz. (E3-24PC)	#583-016	\$ 39.00

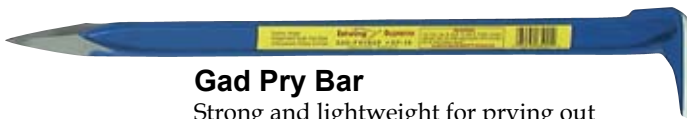


### Paleo-Pick

The new version of the classic Hoe-pick.

Shipping weight 6 lbs.

#583-010 \$ 65.50



### Gad Pry Bar

Strong and lightweight for prying out specimens. Shipping weight 2 lbs.

#583-040 \$ 21.30



### Safety Goggles

Protect eyes from flying particles and dust. Soft comfortable vinyl frame, clear impact resistant lens.

Shipping weight 4 oz.

#583-001 \$ 3.70



### Leather Sheath

Protects your picks and clothes. Top quality sewn leather with belt loop. Shipping weight 4 oz.

#3 Fits pointed tip picks

#583-005 \$ 6.95

#4 Fits chisel picks

#583-006 \$ 6.95



### Long Tip Geologist Picks

Shipping weight 2 lbs.

13 oz. (E3-13P) #583-008 \$ 30.80

13 oz. Leather grip (E13P) #583-009 \$ 31.70



### Chipping Hammer

Combines chisel and pointed tip.

Pointed tip, 20 oz., polished (E3-WC)

Shipping weight 3 lbs.

#583-020 \$ 31.50

## Estwing Rock Chisels

Cushion grip shafts and flared heads.

### ERC-7

Broad splitting head,  $2\frac{1}{2}$ " x 7", 14 oz.

Shipping weight 1 lb.

#583-029 \$ 14.90



### ERC-8

For general splitting,  $1\frac{1}{4}$ " x 8", 16 oz.

Shipping weight 1 lb.

#583-030 \$ 14.90



### ERC-9

Gad Point for wedging and prying,  $\frac{5}{8}$ " x 9", 22 oz.

Shipping weight 2 lbs.

#583-031 \$ 16.10



### ERC-12

Slender for narrow pockets,  $\frac{1}{2}$ " x 12", 9 oz.

Shipping weight 1 lb.

#583-032 \$ 11.30



## Estwing Crack Hammers

Go with the best there is.

Solid forged drilling hammers for use with chisels.

Solid one-piece shafts have molded cushion grips to reduce fatigue during repetitive use.

### B3-2LB

2 lb., short handle. Shipping weight 3 lbs.

#583-022 \$ 34.00



### B3-3LB

3 lb., short handle. Shipping weight 4 lbs.

#583-023 \$ 34.00



### B3-4LB

4 lb., short handle. Shipping weight 5 lbs.

#583-024 \$ 38.30



### B3-4LBL

4 lb., long handle. Shipping weight 5 lbs.

#583-025 \$ 40.00



## PROSPECTING SUPPLIES

### Steel Gold Pans

Traditional, economical, effective.

Rolled 24 gauge steel.

Shipping weight 2 lbs.

12" #530-002 \$ 6.50

14" #530-003 \$ 6.95

16" #530-004 \$ 8.75



### ESTWING™ Plastic Gold Pans

Easily carried and extremely durable.

Colors from Estwing vary from blue to black. Riffled, and rustproof.

Shipping weight 1 lb.

12" #583-062 \$ 4.90

14" #583-063 \$ 6.90

16" #583-064 \$ 8.40



### Sluice Box

Sturdy, lightweight aircraft aluminum sluice box with hundreds of mini-riffles. Legs fold for easy storage or transport. 10" x 36".

Shipping weight: 7 lbs.

#065-090 \$ 85.00







## Gemstone Tumbling Instructions

Explains principles of tumbling and gives directions for easy use of rotary tumblers. Includes many helpful hints and tips. Softcover, 21 pages. By LORTONE.

Shipping weight 2 oz.

#580-034 \$ 3.00

## How to Tumble Polish Gemstones

Step by step instructions for turning rough stones into sparkling jewels. Includes tips on purchasing and using equipment and supplies. By Wexler. Softcover, large format, with photos and illustrations. 31 pages.

Shipping weight 4 oz.

#580-019 \$ 5.00



## Introduction to Lapidary

An authoritative introduction to rock tumbling, cabochon cutting, faceting, gem carving, and more by the former editor of Lapidary Journal. Discusses equipment, tools, and techniques necessary to get started the right way.

By Kraus. Softcover, photos, and illustrations. 196 pages.

Shipping weight 1.2 lbs.

#580-021 \$ 21.95

## The Rockhound's Handbook

An indispensable how-to-begin book for the novice and a handy reference guide for experienced collectors. Discusses equipment, mineral identification, and geology.

By Mitchell. Softcover, photos, and illustrations. 184 pgs.

Shipping weight 1 lb.

#580-023 \$ 12.95



### Opal Cutting Made Easy

Learn how to successfully cut opal step by step. Valuable information explained in plain terms. By Downing. Softcover, Illustrated with photos. 97 pages. Shipping weight 8 oz.

#580-025 \$ 8.95

### How to Use Diamond Abrasives

Make the switch to diamond abrasives easily. Includes sections on tools, tips and techniques. By Riggie. Softcover, large format, photos and illustrations. 30 pages. Shipping weight 4 oz.

#580-020 \$ 5.00

### Facet Cutters Handbook

This book contains all the information needed to expertly facet a gemstone. Includes 22 beautiful cuts. By Soukup. Softcover, illustrated. 64 pages. Shipping weight 4 oz.

#580-013 \$ 5.00

### The Art of Gem Cutting

Presents an in-depth look at techniques for cabbing, sphere-making, and faceting. Includes many useful tips and techniques. By Dake. Softcover, photos. 96 pages. Shipping weight 8 oz.

#580-016 \$ 5.50

### Cabochon Cutting

Covers the basics in producing cabochons from slabbing and polishing to jewelry creation.

By Cox. Softcover, illustrated. 64 pages.

Shipping weight 8 oz.

#580-010 \$ 5.00

### Advanced Cabochon Cutting

Explains the cutting of special shapes such as teardrops, crosses and hearts, and covers combined materials. By Cox. Softcover, illustrated. 64 pages. Shipping weight 8oz.

#580-011 \$ 5.00

## GEMS



### Diagrams for Faceting, Vol. I

A great collection of 160 diagrams for faceting. Covers basic through advanced cuts. By Vargas. Hardcover, 166 pages. Shipping weight 1.7 lbs.

#580-042 \$ 30.00

### Diagrams for Faceting, Vol. II

Contains an additional 132 faceting diagrams of advanced and unusual cuts. By Vargas. Hardcover, 151 pages. Shipping weight 1.7 lbs.

#580-044 \$ 30.00



### Faceting for Amateurs

A complete text on faceting by one of the most respected names in the industry. Includes gem tables, facet cutting data and illustrations. By Vargas. Hardcover, 340 pages.

Shipping weight 2.4 lbs.

#580-045 \$ 40.00

### Description of Gem Materials

An easy to use reference volume on more than 450 gem materials. Includes classifications, hardness, chemical composition and fracture planes. By Vargas. Hardcover. 180 pages. Shipping weight 1.7 lbs.

#580-046 \$ 25.00



## ROCK AND GEM GUIDES



### Gold! Gold!

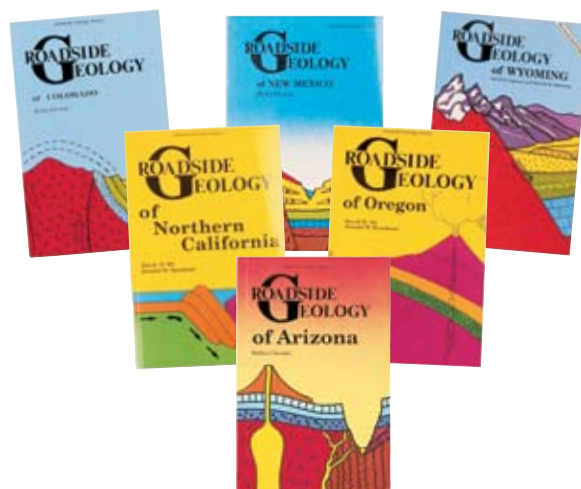
A beginning handbook and guide on how and where to prospect for gold. Tells the best ways to make prospecting pay off! By Petralia. Softcover, 143 pages. Shipping weight 9 oz.

#580-035 \$ 12.95

### Illustrated Guide to Fossil Collecting

Useful pocket guide to collecting and displaying fossils. Lists many U.S. and Canadian site and exhibit locations. By Casanova & Ratkevich. Softcover, 240 pages. Shipping weight 7 oz.

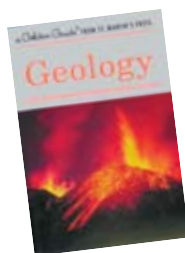
#580-026 \$9.95



### Roadside Geology Books

A wonderful geological description of history, formations, and topography. Covers each individual state in detail. Softcover. Shipping weight 2 lbs.

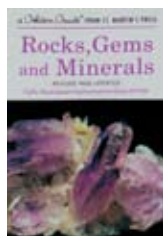
Arizona	#580-071	\$ 15.00
Colorado	#580-072	\$ 15.00
New Mexico	#580-075	\$ 14.00
Central & No. California	#580-078	\$ 20.00
Oregon	#580-079	\$ 16.00
Washington	#580-084	\$ 18.00
Wyoming	#580-086	\$ 12.00



### Golden Guide: Geology

Easy to use guide covering the earth's history from early formation to present. Includes glaciers, volcanoes, rocks and minerals. By Rhodes. Softcover, 160 pages. Shipping weight 5 oz.

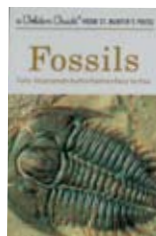
#580-004 \$ 6.95



### Golden Guide: Rocks and Minerals

Handy pocket identification guide to the most common rocks and minerals. Concise and fascinating information. By Zim & Schaeffer. Softcover, full color photos. 160 pgs. Shipping weight 5 oz.

#580-003 \$ 6.95



### Golden Guide: Fossils

Introduction to the past as revealed through fossils. Includes description of plants and animals and the history of the development of life on earth. By Rhodes. Softcover, 160 pages. Shipping weight 5 oz.

#580-005 \$ 6.95



### Golden Field Guide to Rocks & Minerals

The riches of the earth shown in glowing color. Emphasizes crystal structure and properties of minerals and rocks. By Sorrel. Softcover, 280 pages. Shipping weight 8 oz.

#580-024 \$ 14.95



## JEWELRY MAKING

**Jewelry Making for Beginners**

An easy to learn method for fabricating soldered jewelry using the scroll wire method. Clearly detailed with photos and text. Learn jewelry crafting with little investment and no previous experience. By Soukup. Softcover, 49 pages. Shipping weight 4 oz.

#580-017 \$ 5.00

**Jewelry Maker's Handbook**

An overview of basic jewelry making techniques including soldering, smoothing, polishing and forming. By Geisinger. Softcover, 64 pages. Shipping weight 4 oz.

#580-015 \$ 5.95

**Lost Wax or Investment Casting**

A how-to manual that shows assembly and use of equipment to make wax patterns, molds and castings for jewelry. By Sopcak. Softcover, 65 pages. Shipping weight 4 oz.

#580-014 \$ 5.00

**Jewel Tree Making**

A step by step course in making jewel trees. Covers selection of materials, design, and construction. By LORTONE. Softcover, large format. 72 pages. Shipping weight 9 oz.

#580-032 \$ 4.95

## INSTRUCTIONAL DVDS

**Smithing Made Simple**

Learn to make gold and silver jewelry, size your own rings and set your own stone. Award winning goldsmith gives 2 hours of awesome instruction. Watch and learn from the best. DVD, 120 minutes.

#581-001\*\* \$ 59.95

**The Ancient Art of Gem Cutting**

Step by step, learn to cut a round brilliant gemstone. This DVD is considered to be one of the best in it's class. Gemstone cutting and repair. DVD, 120 minutes.

#581-002\*\* \$ 59.95

\*\*DVDs are non-returnable if opened unless defective.

## Motors and Spare parts

### 1/3 HP Motor

110V/60HZ, 1725 RPM, Split phase, capacitor start.  
Resilient mount, 48 frame, single 1/2" shaft, cord, and switch.  
Clockwise rotation from shaft end. Manual reset thermal over-  
load. By Baldor.  
Shipping weight 20 lbs.  
**#300-022 \$ 150.00**



### 1/2 HP Motor

110-220V/50-60HZ, 1725 RPM,  
capacitor start. 5/8" keyed shaft and  
manual reset overload. Resilient 56 frame cradle mount.  
Clockwise rotation from shaft end. Includes cord w/110V plug.  
No switch. For LSS-14P only.  
Shipping weight 23 lbs.  
**#301-008 \$ 205.00**

1/2 HP motor wired for LS18 110V. Includes extra lead for switch.  
LS18 shutoff switch must be ordered separately.  
Shipping weight 23 lbs.  
**#301-005 \$ 205.00**

1/3 HP, 3450 rpm Baldor motor for Olympic 10  
Shipping weight 23 lbs.  
**#300-024 \$ 139.50**

### Lap Motor

110V/60HZ, 1725 RPM, Split phase.  
Cord and switch not included  
Shipping weight 23 lbs.  
**#301-063 \$ 109.00**



### Gear Motors

4 RPM, 110V fits LS10, LS12  
**#301-51 \$ 55.00**  
7 RPM, 110V fits LSS-14P  
**#301-060 \$ 57.00**



### Drive Motors

1.5E (3 lbs.) **#301-021 \$ 16.50**  
3A, 33B, 3-1.5B, 45C (3 lbs.) **#301-034 \$ 20.50**  
QT6, QT12, QT66 (5 lbs.) **#301-030 \$ 48.00**



### Wheel Spacers

For correct spacing of wheels on arbors.  
6061 machined aluminum.  
3/4" ID x 1" OD.  
Shipping weight 2 oz.



1/4"	# 105-002	\$ 1.35
3/4"	# 105-006	\$ 1.95
1"	# 105-008	\$ 2.15
1-1/2"	# 105-010	\$ 2.95
2"	# 105-013	\$ 3.40

**NEW!**

### Bearing Isolators

Molded rubber to reduce vibration.  
Fits BA, NS8, Lu6x and MaxPro models  
manufactured after Jan 1, 2005.  
Use with 200-06 bearing only.  
**#240-069 \$4.10**



### Bearings

Sealed ball bearing, hardened races with set screws,  
extended inner race & dirt slinger with seal.  
Fits All TS8, FS8, LS10 and LS12.  
Also Fits BA, LU6X, NS8 and MaxPro  
models manufactured after Jan 1, 2005.  
(Models manufactured 2004 and prior  
also order 240-069 Bearing Isolator.)  
Shipping weight 6 oz. ea.  
**#200-006 \$ 12.50**

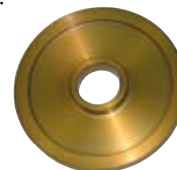


### C-Series Bearings

**#200-002 \$ 7.95**

### Precision Flanges

Billet machined aluminum for precise  
mounting of grinding wheels and  
expanding drums on arbors. 3" x 3/4".  
**Not for saws.** Shipping weight 6 oz.  
**#105-015 \$ 10.30**



### Steel Flanges

For saws or arbors. Ground flat both sides  
and plated for rust prevention.  
Shipping weight 6 oz.



1-1/2" x 1/2	# 101-001	\$ 2.95
1-1/2" x 5/8	# 101-002	\$ 2.95
2" x 1/2	# 101-011	\$ 3.50
2" x 5/8	# 101-012	\$ 3.50
2" x 3/4	# 101-013	\$ 3.50
3" x 5/8	# 101-022	\$ 4.40
3" x 3/4	# 101-023	\$ 4.40

### Pulleys

Cast aluminum, with setscrew. Larger sizes have keyways.  
Shipping weight 6 oz.

1-1/2" x 1/2	# 211-001	\$ 3.55
2" x 5/8	# 211-006	\$ 3.55
2" x 3/4	# 211-007	\$ 3.55
2-1/4" x 1/2	# 211-009	\$ 3.55
2-1/2" x 1/2	# 211-013	\$ 3.75
2-1/2" x 5/8	# 211-014	\$ 3.75
2-1/2" x 3/4	# 211-015	\$ 4.10
2-3/4" x 1/2	# 211-017	\$ 3.90
3" x 5/8	# 211-019	\$ 4.60
4" x 3/4	# 211-031	\$ 6.40
7" x 1/2	# 211-071	\$ 10.20
7" x 5/8	# 211-072	\$ 10.90
7" x 3/4	# 211-073	\$ 10.90

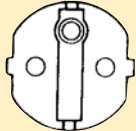


## EXPORT MODELS

Selected models of our equipment are manufactured for export.  
Small tumblers are all CE Marked. Not for domestic use.

**Small Tumblers**

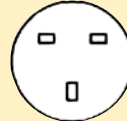
3A 220V, 50/60 Hz, CE Marked	#001-092EU	\$ 79.50
33B 220V, 50/60 Hz, CE Marked	#004-091EU	\$ 109.50
3-1.5 220V, 50/60 Hz, CE Marked	#004-093EU	\$ 116.50
45C 220V, 50/60 Hz, CE Marked	#004-092EU	\$ 109.50



European CEE 7 plug  
Standard



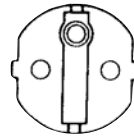
Australian / New Zealand  
ETSA S/86 plug  
available on request.



Great Britain  
BS 1363 A plug  
available on request.

**Midsize Tumblers**

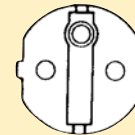
QT6 220V, 50/60 Hz, CE Marked	#006-090EU	\$ 169.00
QT12 220V, 50/60 Hz, CE Marked	#006-091EU	\$ 189.00
QT66 220V, 50/60 Hz, CE Marked	#006-092EU	\$ 206.00



Available with European  
CEE 7 plug style only.

**Commercial Tumblers**

C20 220V, 50/60 Hz	#009-095EU	\$ 600.00
C40 220V, 50/60 Hz	#009-096EU	\$ 690.00
C40 220V, 50/60 Hz	#009-097EU	\$ 800.00
C100-12 220V, 50/60 Hz	#009-090EU	\$ 380.00
C200-12 220V, 50/60 Hz	#009-091EU	\$ 450.00
C300-12 220V, 50/60 Hz	#009-092EU	\$ 550.00



European CEE 7 plug  
Standard

**Cabochon Machines**

Max-Pro 8C 220V, 50 Hz	#044-091EU	\$ 895.00
------------------------	------------	-----------

**Combination Machines**

LU6X-130 220V, 50 Hz	#061-092EU	\$ 630.00
----------------------	------------	-----------

**Trim Saws**

FS8-C 220V, 50 Hz	#056-093EU	\$ 555.00
-------------------	------------	-----------

**Slab Saws**

LS12C Complete 220V, 50 Hz	#053-093E	\$ 1,195.00
LSS-14P 220V, 50/60 Hz	#058-090E	\$ 1,610.00
LS18 220V, 50/60 Hz	#055-090E	\$ 3,070.00



## Index ...

Abrasives	8, 27	Fabulustre	31	Rawhide Mallet	33
Adhesives	31	Felt discs	15	Red rouge	9, 31
Alcohol lamp	28	Flanges	40	Ring clamp	33
Aluminum Oxide	9	Flat Laps	13	Ring mandrel	33
Apron, work	29			Ring sizer	33
Arbors	10 - 13	Gauges, Brass	29	Ring stretcher	33
Attack solvent	31	Geology tools	34, 35	Rock picks	34
		Gold pans	35	Rock Rascal saws	26
Band saw	26	Goggles	34	Rouge cloth	31
Barrels	7	Grinding wheels	14		
Bearings	7, 40			Sanding belts, discs	15
Bezel pusher	33	Hammers	35	Sanding rolls	14
Bezel roller	33	Hand lens	29	Sawblades	24 - 26, 32
Blades, diamond	24 - 26	Hoods, saw	19	Sawframe, jeweler's	32
Bond	31			Saw oil	23
Books	36 - 39	Jewelry tools	32, 33	Saws, slab	20 - 22
Bracelet mandrel	33	Lap, vibrating	13	Saws, trim	18, 19, 26
Brass gauges	29	Leather discs	15	Scott-Murray drums	14
Bufs	30	Loupes	29	Scribes	28
Burnishers	33			Silicon Carbide Grit	5, 8
Burnishing compounds	9	Mandrels	33	Sluice box	35
		Metal tumbling media	9	Splash shield	11
Cerium Oxide	9	Moffatt lamp	13	Sponge rubber discs	15
Chisels	35	Motors	7, 40	Steel shot	9
Chrome Oxide	9			Stone holders	29
Clamps	23, 33	Needle file handles	33	Stone setting pliers	32
Combination Machines	19	Needle file sets	33		
Core drills	17			Tapered spindles	30
Cutting oil	23	Oil, cutting	23	Templates	28
		Oil additive	23	Third hands	29
Diamond bandsaw	26	Opticon	31	Tin Oxide	9
Diamond belts	17	Optiloupes	29	Tool Cool	23
Diamond blades	24 - 26	Optivisors	29	Tool rests	11
Diamond compound	16	Overhead Water System	13	Tripoli	31
Diamond discs	17			Tumbler kits	4
Diamond drills	17	Plastic pellets	9	Tumbler parts	7
Diamond spray	16	Pliers	32	Tumblers	4-6, 27
Diamond wheels	16	Polishes	9	Tumbling grit	5, 9, 27
DiBelts and DiPads	16	Polishing heads	15	Tumbling media	9, 27
Dop Pot	28	Polisher/ Dust Collector	30	Tweezers	29
Dop sticks	28	Polishing pads	17		
Dop wax	28	Prong pusher	33	Ultraviolet lamps	27
Dressing sticks	23	Prospecting supplies	34, 35	Vibratory tumblers	27
		Pulleys	40	Vises	19, 26
Epoxy 330	31			Walnut shell	9
EX drums	14			Water systems	13
Expandable drums	14			Wheel dressers	14
Estwing tools	34, 35			Wheel Spacers	40
EXP diamond blades	24			Zam	31
Export models	41				

## **Orders ...**

Although we strive to keep prices effective for the life of the catalog, prices are subject to change without notice. Items will be invoiced at prices in effect at time of shipment. Please verify current pricing when placing an order.

We take great care in packaging your order. Please inspect all merchandise upon receipt and call us promptly if there are any damages or shortages. In case of damage, you must file a claim with your carrier immediately. Keep damaged goods, containers and packaging for inspection by the carrier. Lortone is not responsible for carrier damage.

All correctly shipped orders returned for any reason other than defective merchandise will be subject to a 20% restocking charge. Pre-authorization is required before returns will be accepted. Notification must be within 30 days of our original ship date. Items must be returned unused, in original packaging and undamaged. Please include a copy of the invoice and brief note of explanation with the return.

## **Equipment Repairs ...**

We maintain an extensive inventory of parts and supplies for all our equipment and in many cases we can repair even very old units. Repair time varies depending upon the problem. Estimates are gladly given but usually require inspection of the unit. When shipping a machine for repair, be sure to include a description of the problem as well as a telephone number and address. If you have a machine in need of repair or refurbishment, please call customer service for instructions at (425) 493-1600.

## **Export Information ...**

Much of our equipment is available for export and can be configured for operation on 220V/50Hz. Some models are CE marked. Please call for specific information. Shipping and customs arrangements are the responsibility of the customer.

## **Special Orders ...**

Many items are available on a special order basis. As these items are not normally stocked, please allow extra time for their fabrication and delivery. Special order items require pre-payment and are not returnable.

## **Hours of Business ...**

We are open Monday - Friday 8:00 AM - 4:30 PM PST

### **LORTONE**

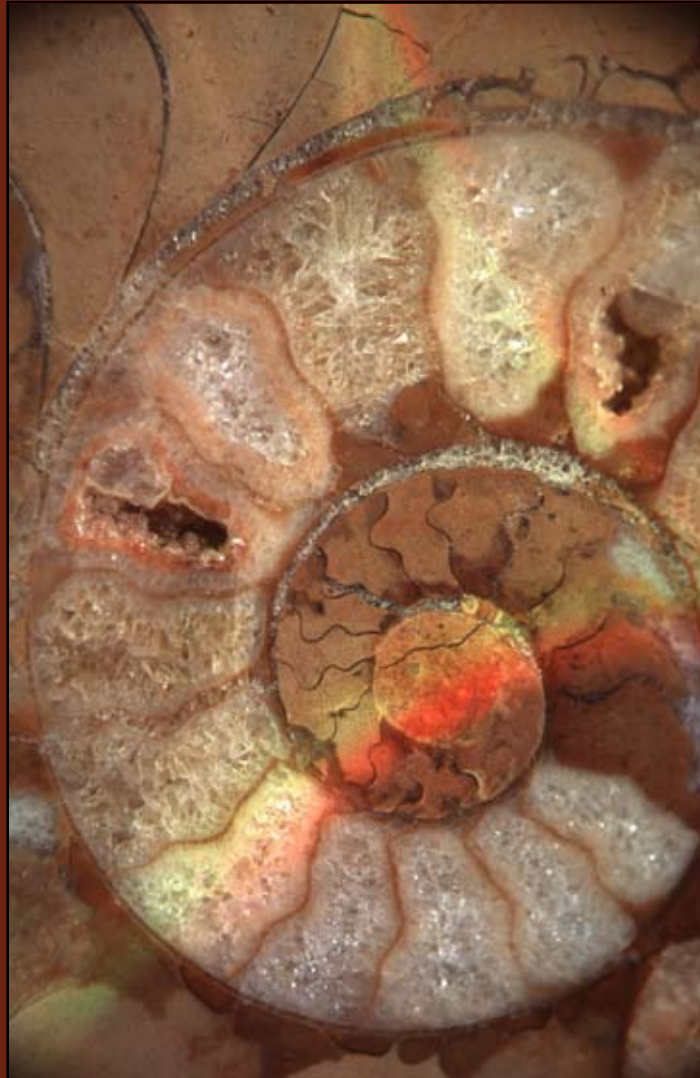
12130 Cyrus Way, Mukilteo, WA 98275-5700

(425) 493-1600 (425) 493-9494(fax)

Email: [equipment@lortone.com](mailto:equipment@lortone.com)

[WWW.LORTONE.COM](http://WWW.LORTONE.COM)

Phone orders 1-800-426-6773



**LORTONE**

12130 Cyrus Way  
Mukilteo, WA 98275-5700  
Phone: (425) 493-1600  
Fax: (425) 493-9494