

GEMBOREE FIELD TRIP TO LUNE RIVER

With Peter Harris

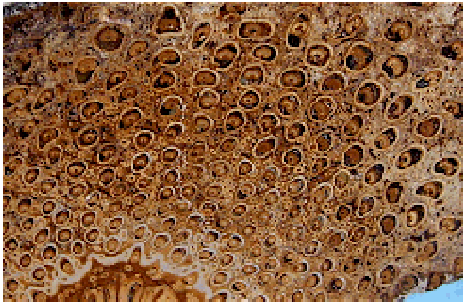
The Mineral Society of Tasmania

Two bus loads of people met with trip leader Peter at Huonville at 9.30 am and after a comfort stop with an opportunity to stretch the legs and take in the view at Port Huon and a second stop at Dover, enabling the bus driver to grab some lunch, while we admired Faith, Hope and Charity in Dover Bay, the eager fossickers finally arrived at the Leprena Track at 11am.

The group split into two parties with those not fussed at the thought of sharing the bush with a leech or two, disappeared into the cutting grass on the western side of the main road, while the others concentrated their efforts on the area to the right of the Leprena Track.

The two parties met again for lunch at 1.30, and after a bit of discussion, nearly all of the group decided to dig amongst the cutting grass in the afternoon. Unfortunately the day was getting away from us and the need to start packing up for the return trip cut the afternoon digging time short.

Most of the fossickers went away happy with a fern specimen or two, and some nice pieces of wood, but sadly, very few agates. Several people vowed to return, having been bitten by the Lune River bug.



Petrified Fern - Lune River
Tasmania